



San Clemente Palace
VENICE



#1. In Venice # Top 20 in the World

SUITE & RESIDENCES CATALOGUE

San Clemente

Suite Tintoretto

Suite

Tiepolo Suite

Marco Polo

Suite Giardini

Suite Lido Suite

Lagoon Suite

Venice Suite

Navigante Jr. Suite



An Extraordinary Luxury Stay Experience

One Bedroom Special Suites

| Special Suite Type | Nr. of Suites | Size of Suites (approx) | View of the Suite |
|---------------------|---------------|-------------------------------|---------------------------|
| Navigante Jr. Suite | 4 | 53 – 65 sq m/ 570 – 700 sq ft | Venice & Lagoon View |
| Venice Suite | 20 | 80 – 88 sq m/ 861 – 947 sq ft | Garden / Lagoon View |
| Lagoon Suite | 2 | 85 sq m/ 915 sq ft | Venice & Lagoon View |
| Lido Suite | 1 | 100 sq m/ 1.076 sq ft | Lido Island & Lagoon View |
| Giardini Suite | 1 | 66 sq m/ 710 sq ft | Garden & Lagoon View |
| Marco Polo Suite | 1 | 110 sq m/ 1.184 sq ft | Venice & Lagoon View |
| Tiepolo Suite | 1 | 89 sq m/ 958 sq ft | Garden & Lagoon View |
| Tintoretto Suite | 1 | 130 sq m/ 1.400 sq ft | Garden & Lagoon View |
| San Clemente Suite | 1 | 190 sq m/ 2.045 sq ft | Venice & Lagoon View |

Two Bedroom Suites

| | |
|------------------|--|
| Tiepolo Suite | Combined with adjacent 42 sq m/452 sq ft Grand Deluxe Room |
| Tintoretto Suite | Combined with adjacent 42 sq m/452 sq ft Grand Deluxe Room |

Residences

| Residence Type | Nr. of Bedrooms | Size of the Residence (approx.) |
|--|-----------------|---------------------------------|
| Villa Giardini | 2 | 112 sqm / 1.205 sq ft |
| Lido Residence | 2 | 190 sq m / 2.045 sq ft |
| San Clemente Palazzo | 3 | 380 sq m / 4.090 sq ft |
| Lagoon Residence | 3 | 150 sq m / 1.615 sq ft |
| Lagoon Palazzo | 6 | 300 sq m / 3.230 sq ft |
| Navigante Wing | 5 | 338 sq m / 3.638 sq ft |
| San Clemente Palazzo with Navigante Wing | 8 | 718 sq m/ 7.728 sq ft |

Seeking For a Luxury Escape in the Largest Hotel Suites & Residences?

San Clemente Palace- Venice is the preferred address of the guests who appreciate large bedrooms, living areas and indulging bathrooms during their stay. The special suites and residences of San Clemente Palace offers the highest ceilings in the guest rooms and suites within the city.

Special residences are the perfect base for the families, couples those seeking a discreet and relaxing getaway during their stay, large groups and bachelor/bachelorette party hosts.



ISLAND INFORMATION

- 1 Group Arrivals and Departures
- 2 Hotel Entrance - Reception - Concierge
- 3 Bikes Parking
- 4 Sunset Hill
- 5 Natural Garden
- 6 Sunset Garden
- 7 Clemente Bar & Sunset Bar
- 8 Acquerello Signature Restaurant
- 9 Historical San Clemente Church
- 10 Church Terrace
- 11 Water Taxi Dock (Boat Service from/to St. Mark's Square)

- 12 Event Lounge
- 13 Clemente Lounge
- 14 Main Courtyard
- 15 Luggage Courtyard
- 16 Oriente Room
- 17 Insieme Restaurant
- 18 Insieme Courtyard
- 19 Secret Garden
- 20 Navigante Courtyard
- 21 Art Courtyard
- 22 Lido Hill

- 23 Central Garden
- 24 Conference Centre
- 25 Lido Garden
- 26 Olive Hill
- 27 Natural Lake
- 28 Golf Pitching Course
- 29 Tennis Court
- 30 Pool
- 31 Palm Garden
- 32 La Dolce Brasserie & Pool Bar
- 33 Kids' Club

- 34 Helipad
- 35 Event Tent Area
- 36 Fitness & SPA
- 37 Lake Hill
- 38 SPA Cabin
- 39 Outside Fitness
- 40 Adult Beach
- 41 Buddha - Yoga Zone
- 42 Open Air Cinema
- ■ ■ Jogging Track

RESTAURANTS & BARS

- 8 Acquerello Signature Restaurant Fine Dining

- 17 Insieme Restaurant - Breakfast & Dining

- 32 La Dolce Brasserie & Pool Bar

- 7 Clemente Bar & Sunset Bar

ROOM & SUITES

A Wing Rooms

118 - 121
218 - 242
318 - 343
225 - Tiepolo Suite
325 - Tintoretto Suite

D Wing Rooms

163 - 183
263 - 276
363 - 376

G Permak Suites

501 - Malibran Suite
502 - La Fenice Suite

B Wing Rooms

101 - 116
201 - 216
301 - 316

C Wing Rooms

159 - 162
244 - 262
344 - 362

E Navigante Suites

186 - 189 - Navigante Suites
601 - 602 - Lido Suites
185 - Marco Polo Suite
600 - San Clemente Suite

H Giardini Villa

701 - 702

F Lagoon Suites

421 - 423
431 - 433

San Clemente Palace luxurious comfort in a magical and Mediterranean atmosphere.

Situated on its own private island just a short boat ride from St. Mark's Square, San Clemente Palace embraces its visitors with its unique charm away from the hum of the city centre.

The enchanting five-star retreat is home to beautifully conceived suites overlooking the lagoon and verdant gardens.

With every step you take through the grand palace corridors and flawless suites, the sense of place San Clemente provides is matchless in Venice.

Experience the history of the 12th century church, simply stroll through the island's lush gardens or enjoy authentic Venetian cuisine in a resort that is truly a sensory delight.



Benvenuti at San Clemente Palace - Venice

Experience luxurious comfort in a magical and Mediterranean atmosphere.

Situated on its own private island just a short boat ride from St. Mark's Square, San Clemente Palace embraces its visitors with its unique charm away from the hum of the city centre.

The enchanting five-star retreat is home to beautifully conceived suites overlooking the lagoon and verdant gardens.

With every step you take through the grand palace corridors and flawless suites, the sense of place San Clemente provides is matchless in Venice.

Experience the history of the 12th century church, simply stroll through the islands lush gardens or enjoy authentic Venetian cuisine in a resort that is truly a sensory delight.



SAN CLEMENTE SUITE

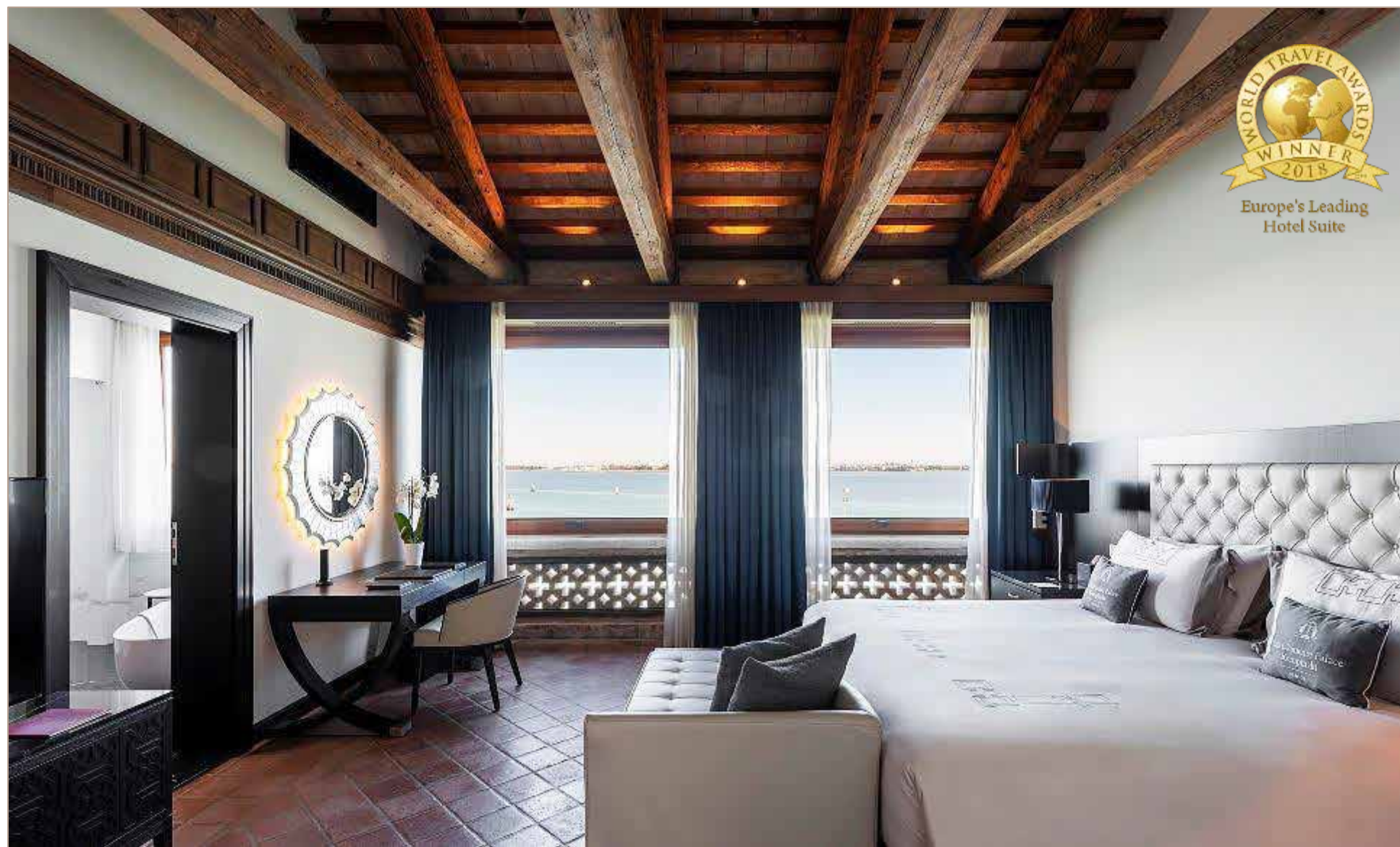
“Europe’s Leading Hotel Suite” by World Travel Awards

With picture windows running the length of every room, the palace’s most expansive and private suite offers unrivalled views of the lagoon city.

Spanning the entire floor of a secluded wing, the suite pairs sophisticated modern furnishings with exposed timber ceilings, wooden pillars and elaborate masonry original to the monastery.

The interiors are replete with bespoke details including custom Calacatta marble, handmade silks and Murano tapware. With its full kitchen, this magnificent accommodation sets the stage for chef-prepared meals paired with Italian vintages from the suite’s own wine cellar.

Guests in residence can come and go by gondola or boat via own private pier.



San Clemente Suite

FACTS & FIGURES

- Size:** Approx. 190 sq m / 2.045 sq ft
- View:** Lagoon and San Marco View
- Bedroom:** Gondola inspired bespoke king-bed
- Capacity:** 3-person maximum occupancy (one extra bed is allowed)
- Bathroom:** Expansive five-fixture bathroom including separate bath and walk-in shower
Artisan designed Calacatta marble
- Inclusive:**
- a bottle of San Clemente Special wine and chocolate/fruit
 - complimentary chocolate box
 - complimentary minibar once per stay (soft drinks only)
 - the use of a private pier, suitable for yachts of up to 35- 40 m. in length (subject to seasonality)

ICONIC FEATURES

- Original 18th century wooden pillars and brickwork
- Handmade silk tapestry
- Full kitchen and wine cellar
- Matchless lagoon views
- Floor-to-ceiling panoramic windows
- Large wardrobes
- Library
- Private canopy in the courtyard
- Combinable with Lido Residence, located below. Combined accommodation provides exclusive and private concierge services
- Personal butler available
- Private dining for up to 8 people
- Individually crafted Calacatta marble and Murano glass accessories
- Personal chef in attendance (optional)



San Clemente Suite



Design Bathroom

Signature Feature:
Artisan designed Calacatta marble



San Clemente Suite



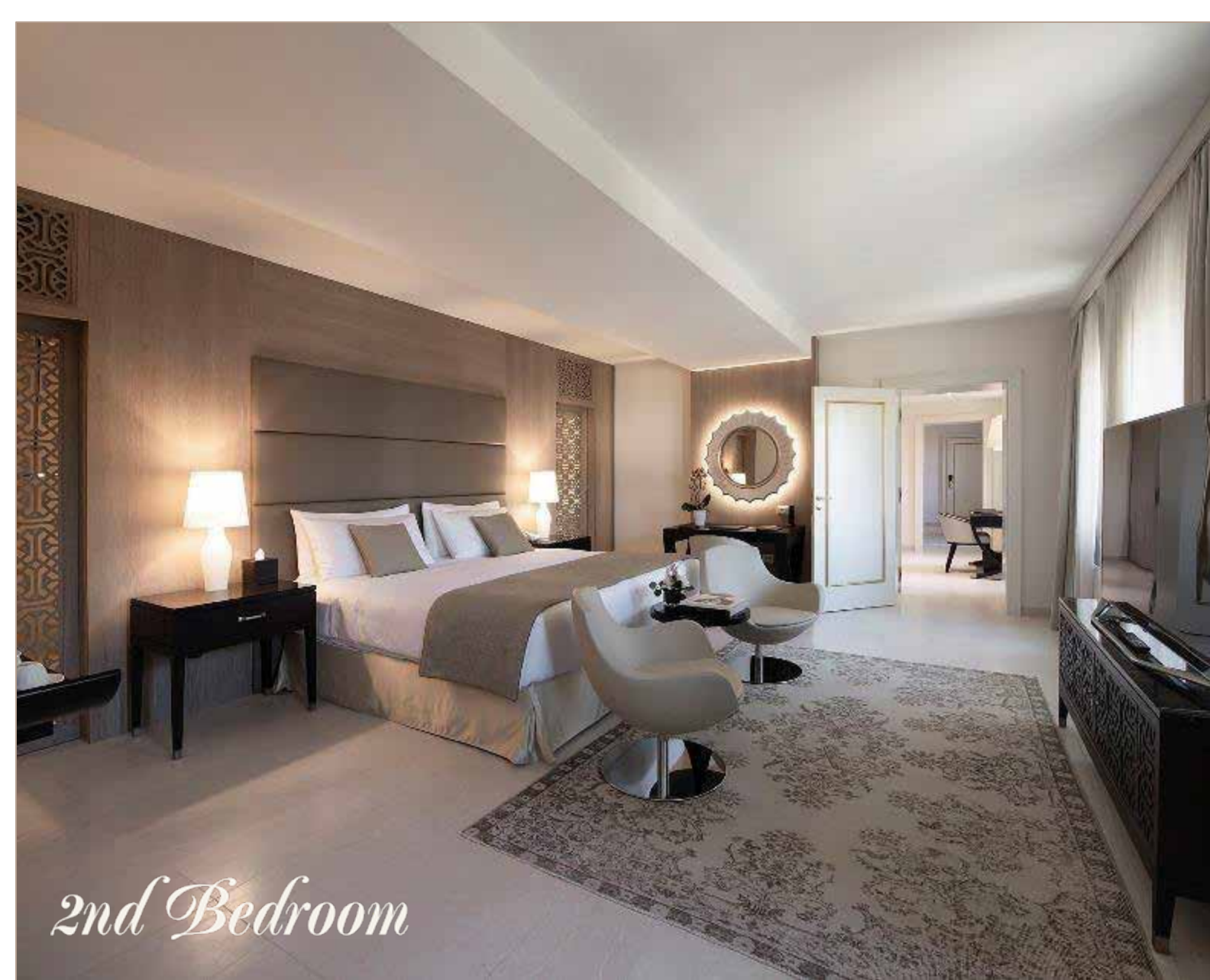
San Clemente Suite

ICONIC FEATURES

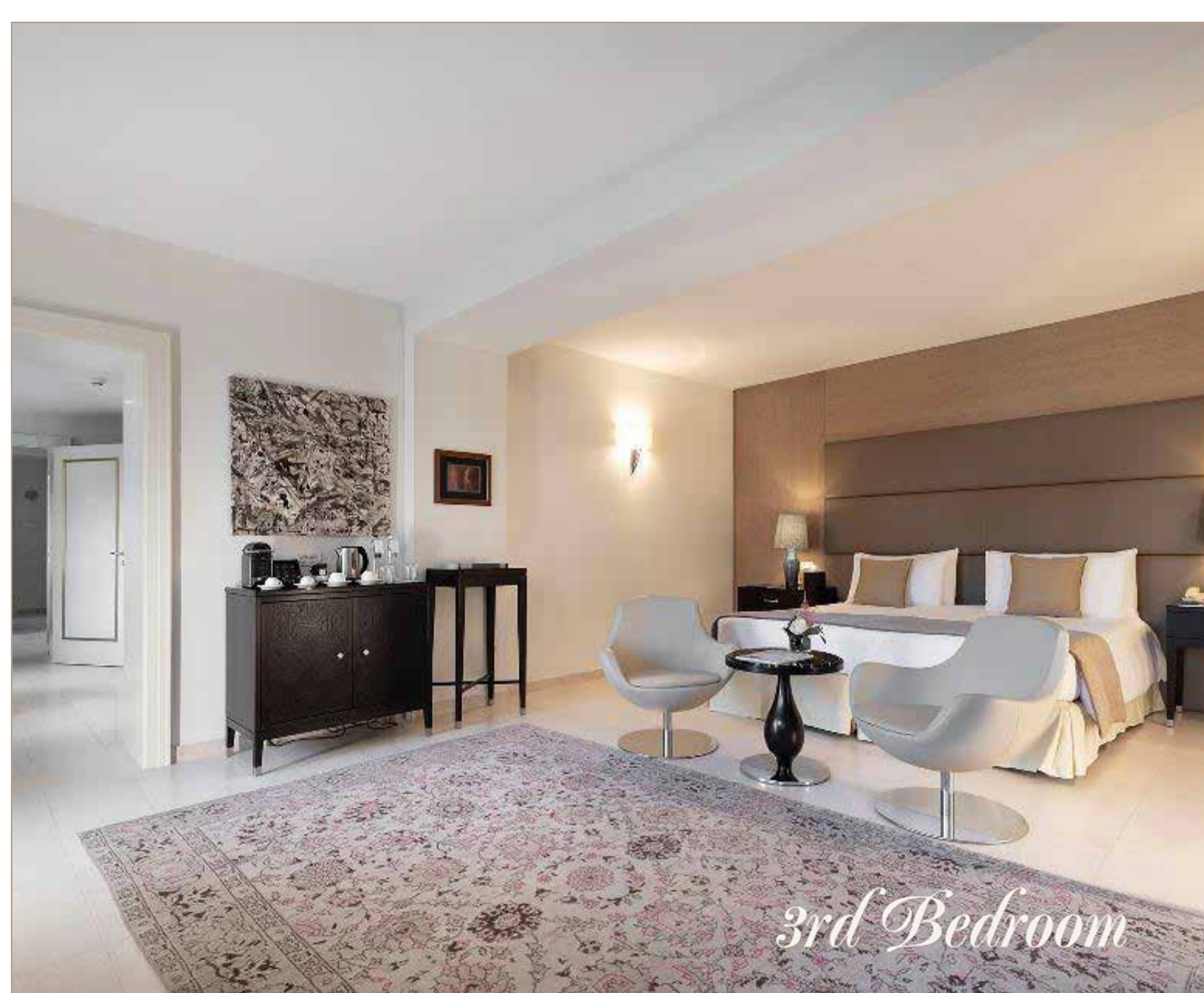
- Original 18th century wooden pillars and brickwork
- Handmade silk tapestry
- Full kitchen and wine cellar
- Matchless lagoon views
- Floor-to-ceiling panoramic windows
- Large wardrobes
- Library
- Private canopy in the courtyard
- Personal butler available
- Private dining for up to 8 people
- Individually crafted Calacatta marble and Murano glass accessories
- Personal chef in attendance







2nd Bedroom



3rd Bedroom



Private Dock



Private Canopy

SAN CLEMENTE PALAZZO (Three – Bedroom)

“Europe’s Leading Hotel Suite” by World Travel Awards

With picture windows running the length of every room, the palace’s most expansive and private suite offers unrivalled views of the lagoon city.

Spanning the entire floor of a secluded wing, the suite pairs sophisticated modern furnishings with exposed timber ceilings, wooden pillars and elaborate masonry original to the monastery.

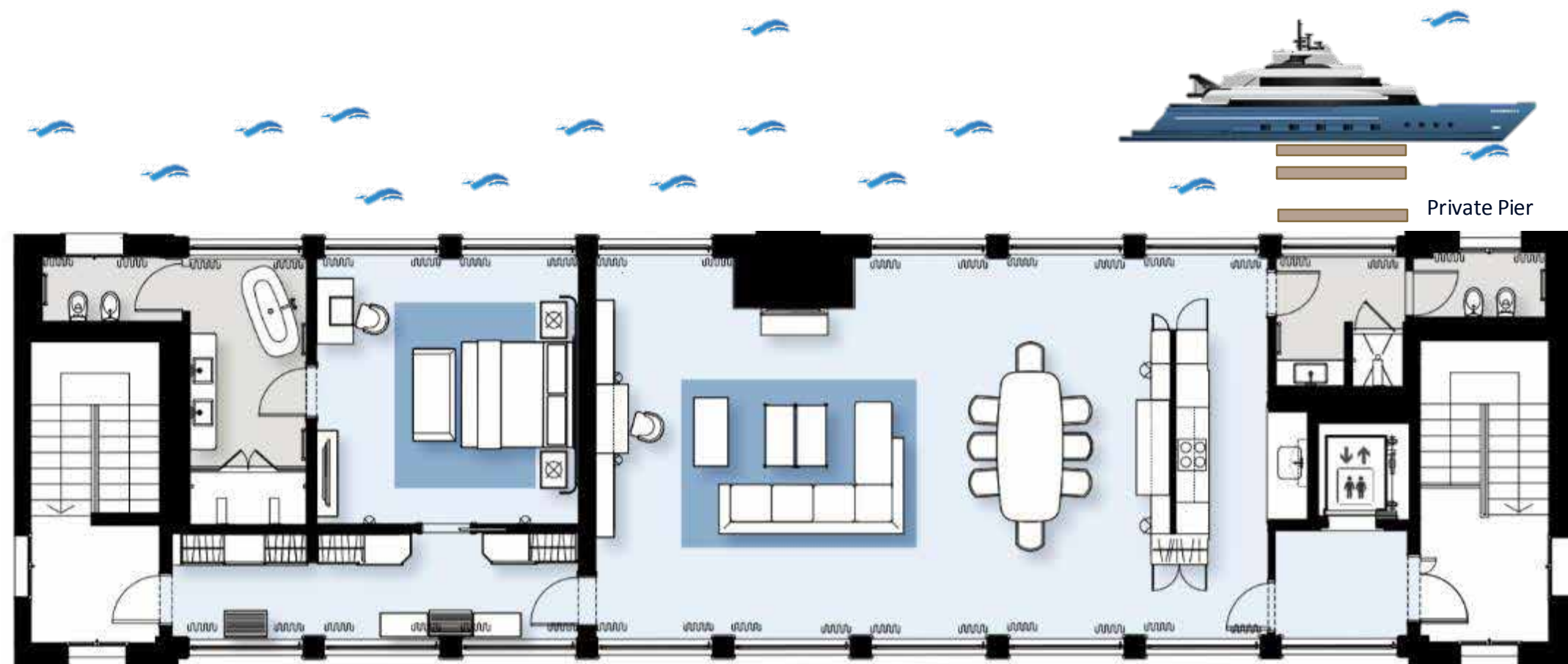
The interiors are replete with bespoke details including custom Carrara marble, handmade silks and Murano tapware. With its full kitchen, this magnificent accommodation sets the stage for chef-prepared meals paired with Italian vintages from the suite’s own wine cellar. Guests in residence can come and go by gondola or boat via a private pier.

San Clemente Palazzo, combining San Clemente Suite with Lido Residence, is ideal for 6-10 guests who appreciate a private concierge service with a dedicated Lady in Red along with a very large accommodation area with private elevator and exclusive pier, which is ideal, and rare to find, for exclusive gatherings, such as bachelorette parties.



San Clemente Palazzo

SAN CLEMENTE
(One Bedroom SUITE)
(Nr. 600)
Approx. 190 sq m / 2.045 sq ft

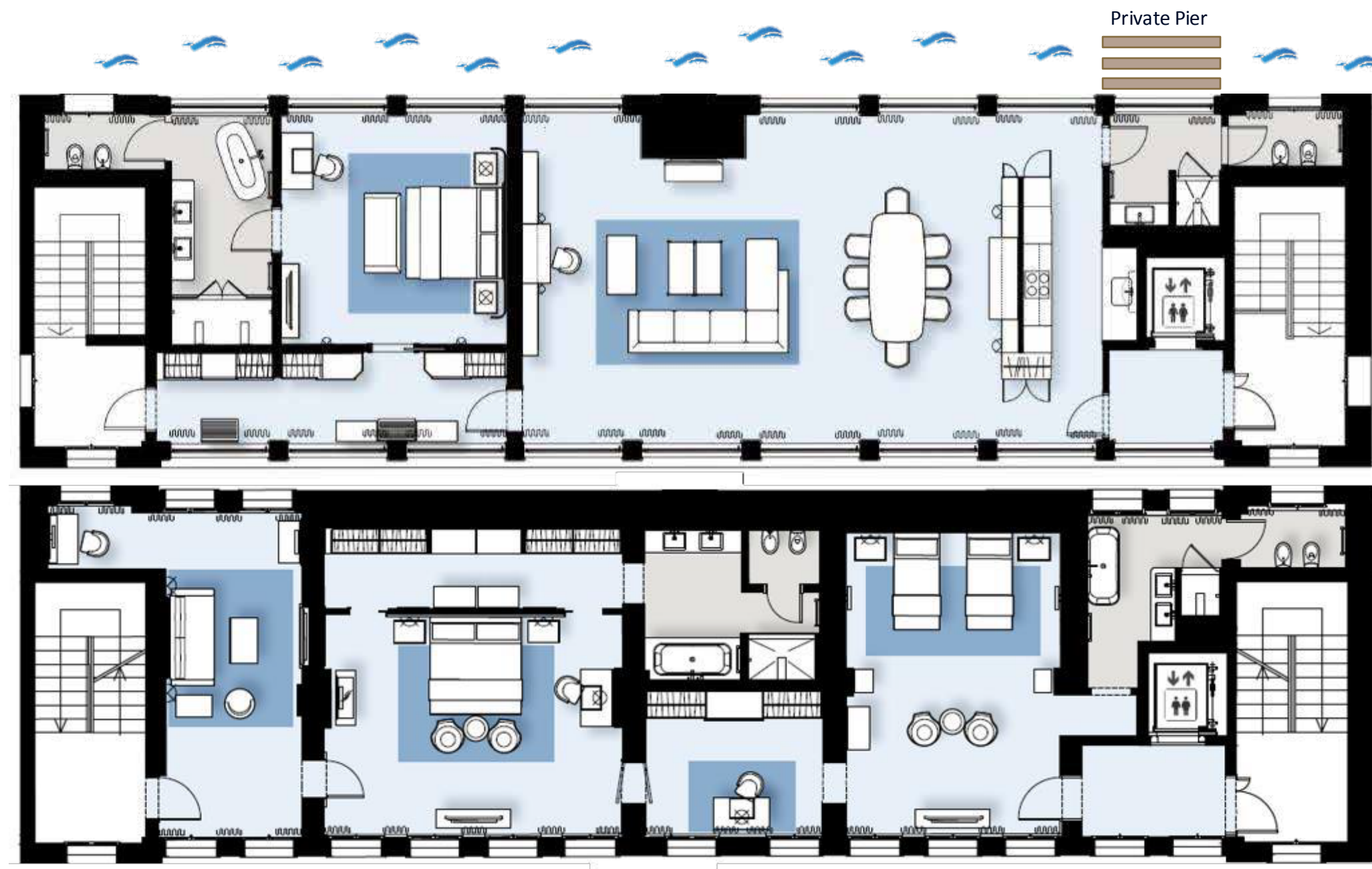


San Clemente Suite

**SAN CLEMENTE
PALAZZO**
(Three Bedrooms Nr.600 + 601 + 602)
Approx. 380 sq m / 4.090 sq ft

Two Floors with Private Elevator

*Combining the San Clemente Palazzo and Navigante Wing, this wing of the hotel can be booked to form an eight-bedroom palazzo which provides complete independence from the hotel.



San Clemente Palazzo

TINTORETTO SUITE

Named in honour of Venice's famed 16th-century Renaissance painter Jacopo Comin, called Tintoretto, the luxurious suite offers a bright and airy residential atmosphere.

Elegantly appointed with classic furnishings, the voluminous suite features Murano-glass chandeliers strung from vaulted ceilings, traditional terrazzo flooring and large windows overlooking the palace's centuries-old gardens.

The Tintoretto Suite is a sanctuary of beauty and tranquility in Venice, with large, separate areas that allow true luxury living, day and night.

In this bright, centrally located suite, the living room features a spacious dining area with large windows overlooking the park, the lagoon and San Clemente Palace's surroundings.



Tintoretto Suite

FACTS & FIGURES

| | |
|------------|--|
| Size: | Approx. 130 sq m/ 1.400 sq ft |
| View: | Garden and Lagoon View |
| Bedroom: | King size bed |
| Capacity: | 3-person maximum occupancy (one extra bed is allowed) |
| Bathroom: | Expansive five-fixture bathroom including separate bath and walk-in shower Artisan designed Carrara marble |
| Inclusive: | <ul style="list-style-type: none">• a bottle of San Clemente Special wine and chocolate/fruit• complimentary chocolate box• complimentary minibar once per stay (soft drinks only) |

ICONIC FEATURES

- Named after the 16th-century Italian painter Tintoretto
- Located adjacent to the grand imperial staircase and lobby area
- Can be chosen as a one-bedroom suite or combined with suite 326 as two-bedroom suite
- Hand-crafted Murano glass chandelier
- Individually crafted Carrara marble and Murano glass accessories
- Private dining for up to 6 people
- Personal butler available
- Splendid sunset view
- Lofted 8-metre-high ceiling



Tintoretto Suite



Design Bathroom

Signature Feature:
Artisan designed Carrara marble

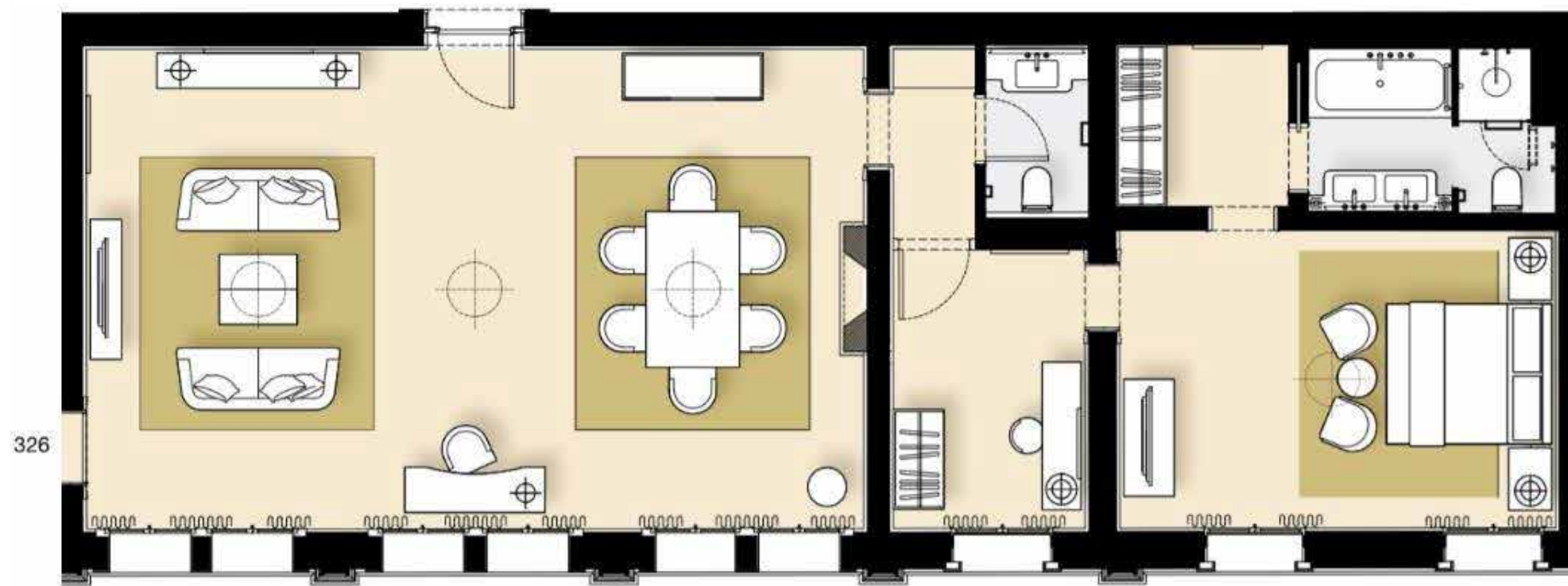


Tintoretto Suite

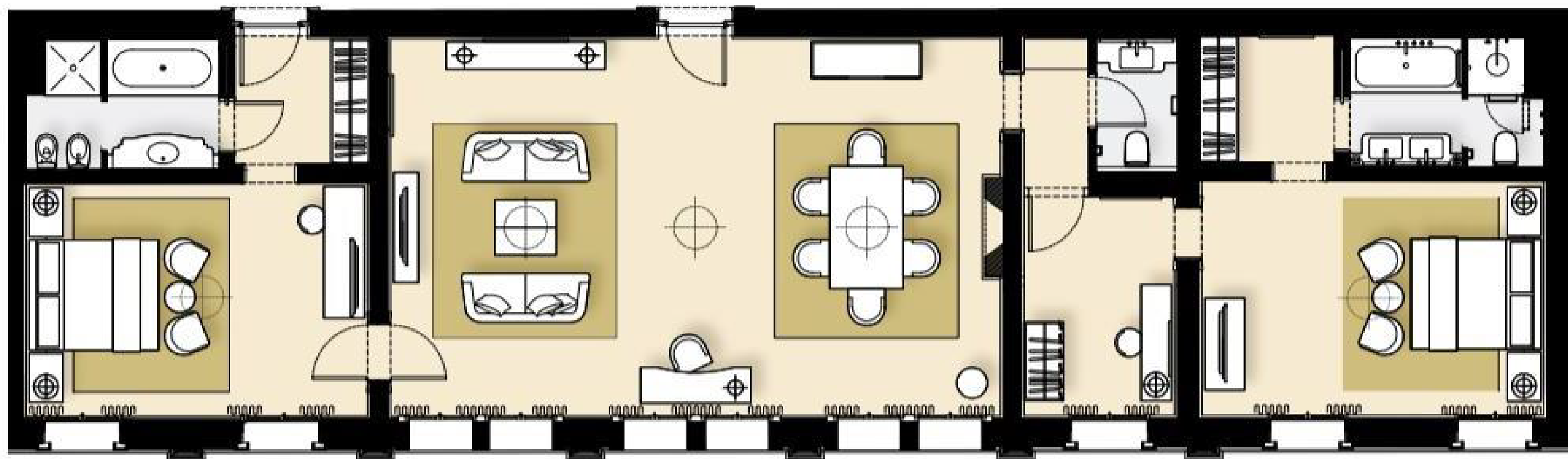


Tintoretto Suite

TINTORETTO SUITE
(One Bedroom Nr. 325)
Approx. 130 sq m / 1.400 sq ft



TINTORETTO SUITE
(Two Bedroom Nr. 325 + 326)
Approx. 170 sq m / 1.830 sq ft



Tintoretto Suite (Two - Bedroom)

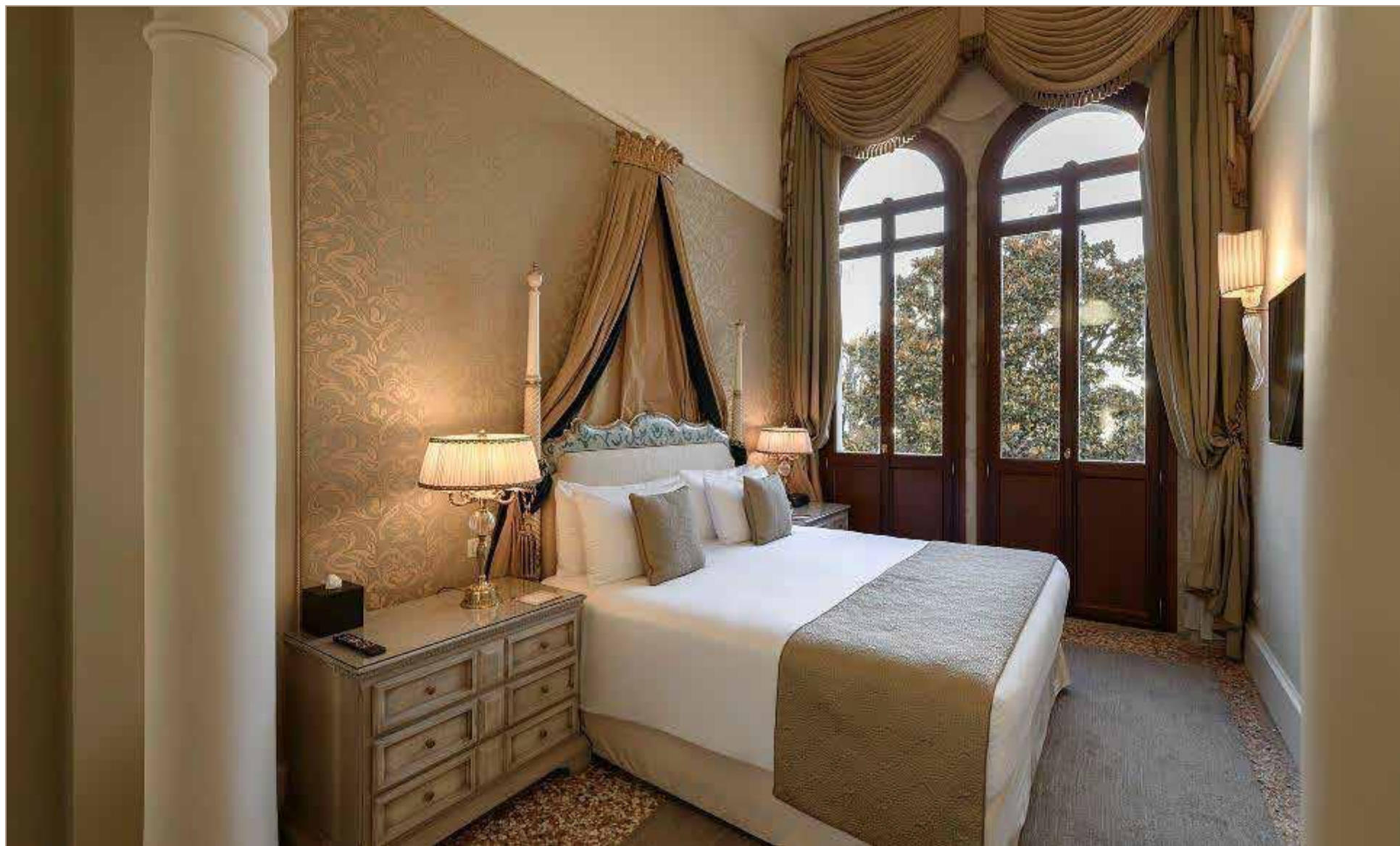
TIEPOLO SUITE

Captivating gardens and stunning views of the setting sun...

Classic embellishments - such as voluptuous drapes, silk-covered walls, terrazzo flooring and Murano-glass chandeliers - characterise this enchanting private retreat, which is named after the renowned 18th-century painter Giovanni Battista Tiepolo.

Both the salon and bedroom feature lofty ceilings and 3-metre-high windowed doors, which open to captivating gardens and stunning views of the setting sun.

The opulent suite looks out over the lush gardens down to the lagoon, and features a comfortable, spacious king-size bed. Guests will adore the private salon, decorated in a palette of opulent greens and golds, while the white Italian marble bathroom is calm and relaxing, offering stunning views out over the centuries-old park.



Tiepolo Suite

FACTS & FIGURES

- Size: Approx. 89 sq m/ 958 sq ft
- View: Garden and Lagoon View
- Bedroom: King size bed
- Capacity: 3-person maximum occupancy (one extra bed is allowed)
- Bathroom: Expansive five-fixture bathroom including separate bath and walk-in shower
Artisan designed Carrara marble
- Inclusive:
- a bottle of San Clemente Special wine and chocolate/fruit
 - complimentary chocolate box
 - complimentary minibar once per stay (soft drinks only)

ICONIC FEATURES

- Design inspired by Tiepolo, 18th-century Italian painter
- Can be chosen as a one-bedroom suite or combined with suite 226 as two-bedroom suite
- Lofted 4-metre-high ceiling
- Amazing sunset views across Venice Lagoon
- Individually crafted Carrara marble and Murano glass accessories
- Private dining for up to 6 people
- Personal butler available
- Hand-crafted Murano glass chandeliers
- Splendid sunset view



Tiepolo Suite

A wide-angle photograph of a sophisticated bathroom. The walls are clad in large, light-colored marble tiles with prominent grey veining. On the left, a freestanding white bathtub is positioned against the wall. Above it, a chrome towel rack holds several white towels. To the right, a long white vanity features two rectangular sinks with modern chrome faucets. A large, frameless mirror spans the wall above the vanity, reflecting the room and a window. The window has a dark wooden frame and is partially open, revealing a balcony with a white railing and a view of trees and a building in the distance. A cylindrical chrome light fixture is mounted on the wall above the vanity. The floor is made of light-colored stone tiles.

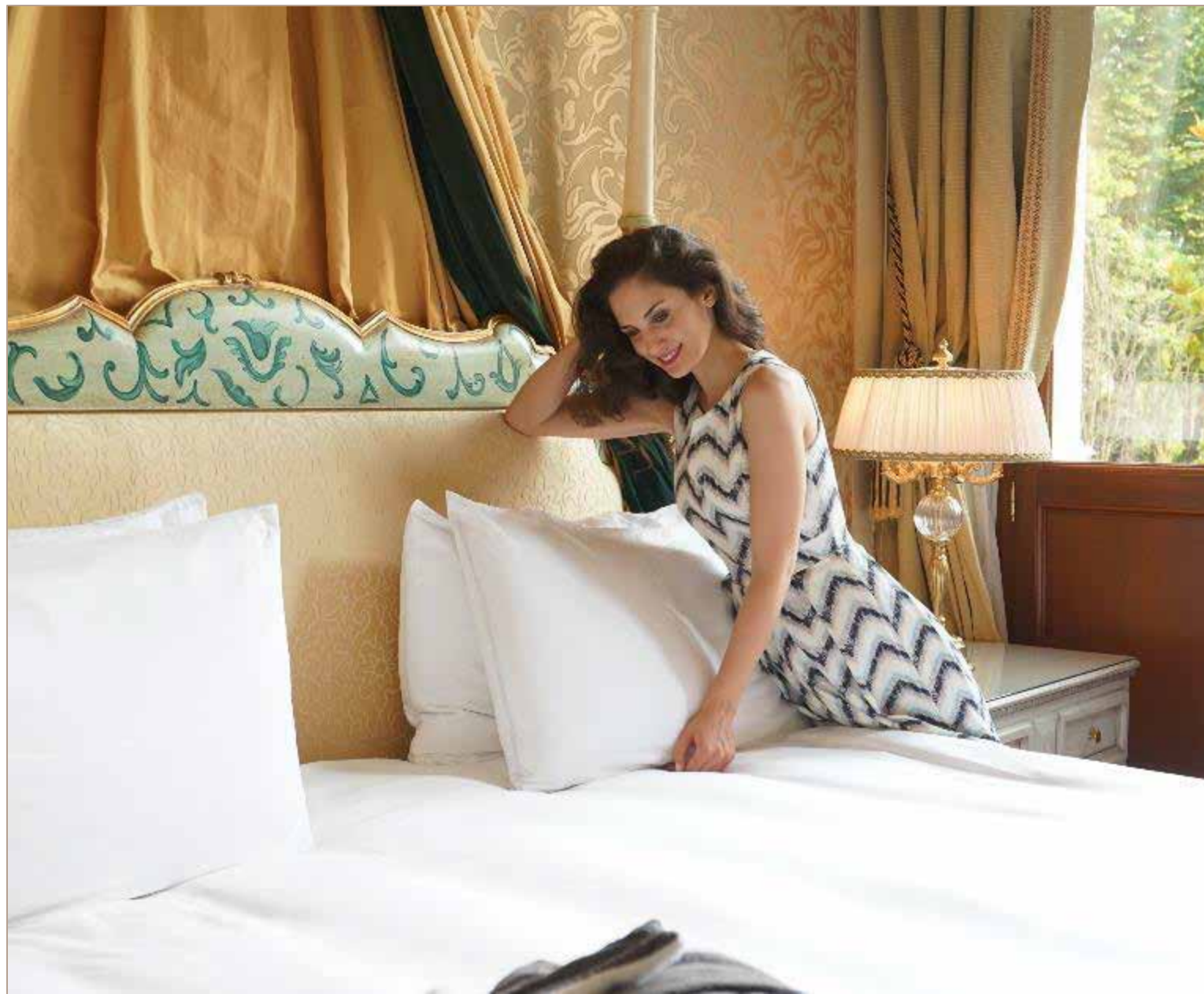
Design Bathroom

Signature Feature:
Splendid centuries-old bathtub view

Tiepolo Suite

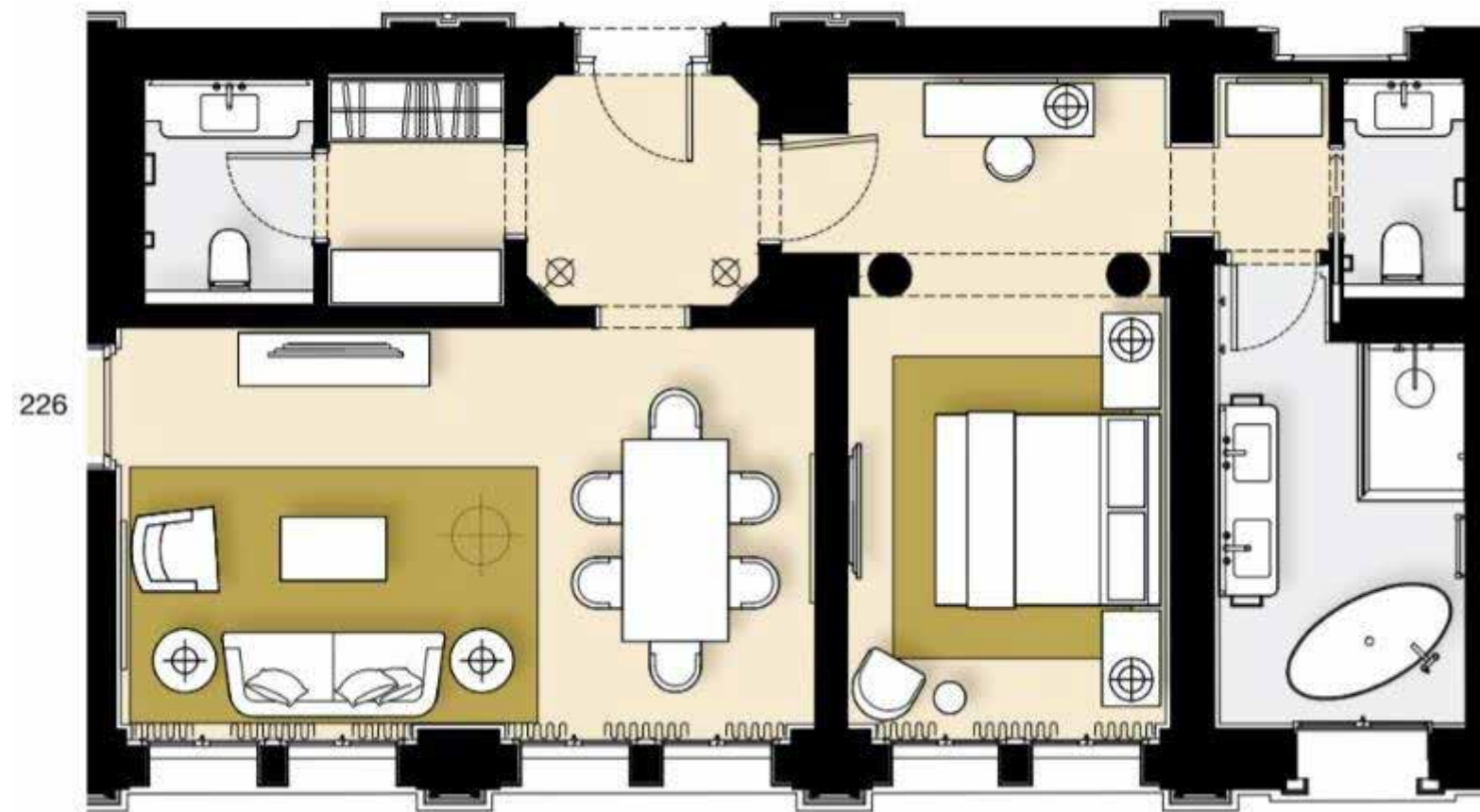


Tiepolo Suite



Tiepolo Suite (Two - Bedroom)

TIEPOLO SUITE
(One Bedroom Nr. 225)
Approx. 89 sq m / 958 sq ft



TIEPOLO SUITE
(Two Bedroom Nr. 225 + 226)
Approx. 130 sq m / 1.400 sq ft



Tiepolo Suite (Two - Bedroom)

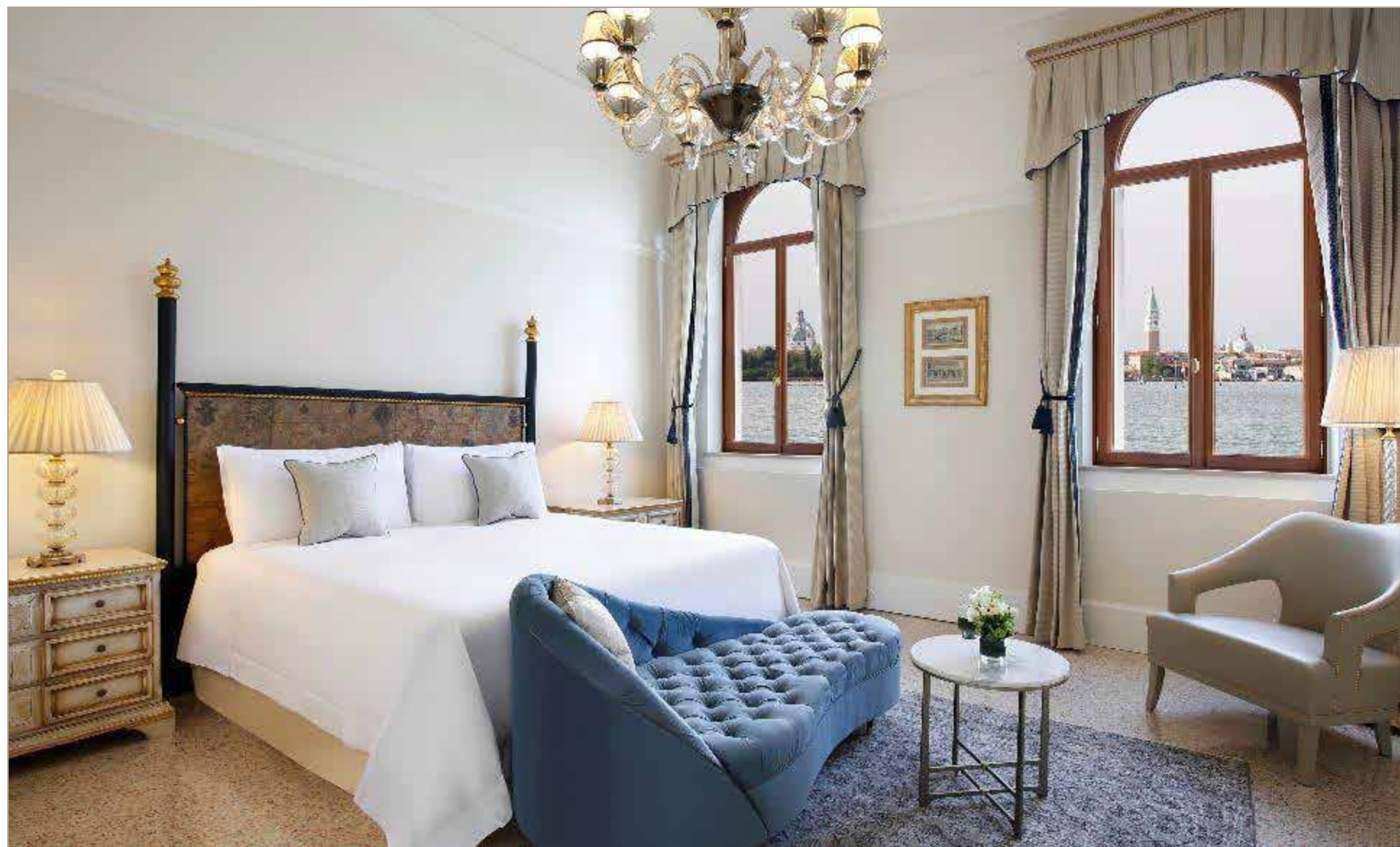
MARCO POLO SUITE

Private boats, passing close by, recall the adventurous spirit of the suite's namesake merchant explorer...

Located directly by the water in the Navigante Wing and with access to a private dock, the Marco Polo Suite is composed of a C-shaped living space with four large windows that frame the enchanting views of St. Mark's bell tower, as well as an elegant bedroom that overlooks the lagoon.

With a tastefully decorated private salon and an Italian marble bathroom featuring a walk-in shower, separate bath and exquisite views out over the lagoon, this suite offers guests the highest level of comfort.

In this elegant suite, guests can enjoy an ornate and sumptuous king-size bed, Murano-glass chandeliers and terrazzo floors as a part of unique regal sensibility.



Marco Polo Suite

FACTS & FIGURES

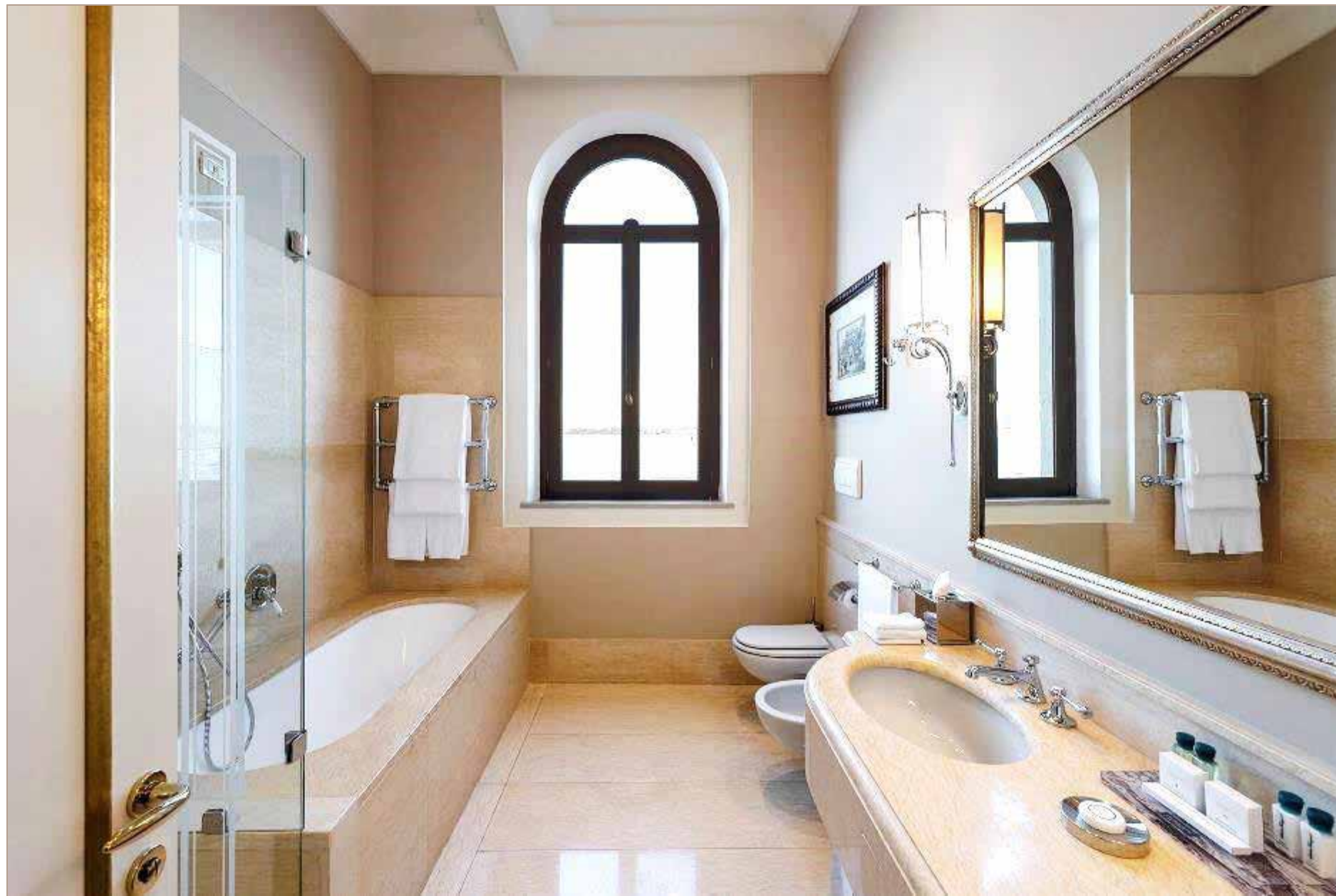
| | |
|------------|--|
| Size: | Approx. 110 sq m/ 1.184 sq ft |
| View: | Lagoon and San Marco View |
| Bedroom: | King size bed |
| Capacity: | 3-person maximum occupancy (one extra bed is allowed) |
| Bathroom: | Expansive five-fixture bathroom including separate bath and walk-in shower Original Italian marble |
| Inclusive: | <ul style="list-style-type: none">• a bottle of San Clemente Special wine and chocolate/fruit• complimentary chocolate box• complimentary minibar once per stay (soft drinks only)• the use of a private pier, suitable for yachts of up to 40 m. in length (subject to availability and seasonality) |

ICONIC FEATURES

- Design oval-shaped living room
- Magnificent Venice Lagoon and St. Mark's view
- Hand-crafted Murano glass chandeliers
- Expansive walk-in wardrobe
- Individually crafted Italian marble and Murano glass accessories



Marco Polo Suite



Design Bathroom

Signature Feature:
Original Italian marble with San Marco View

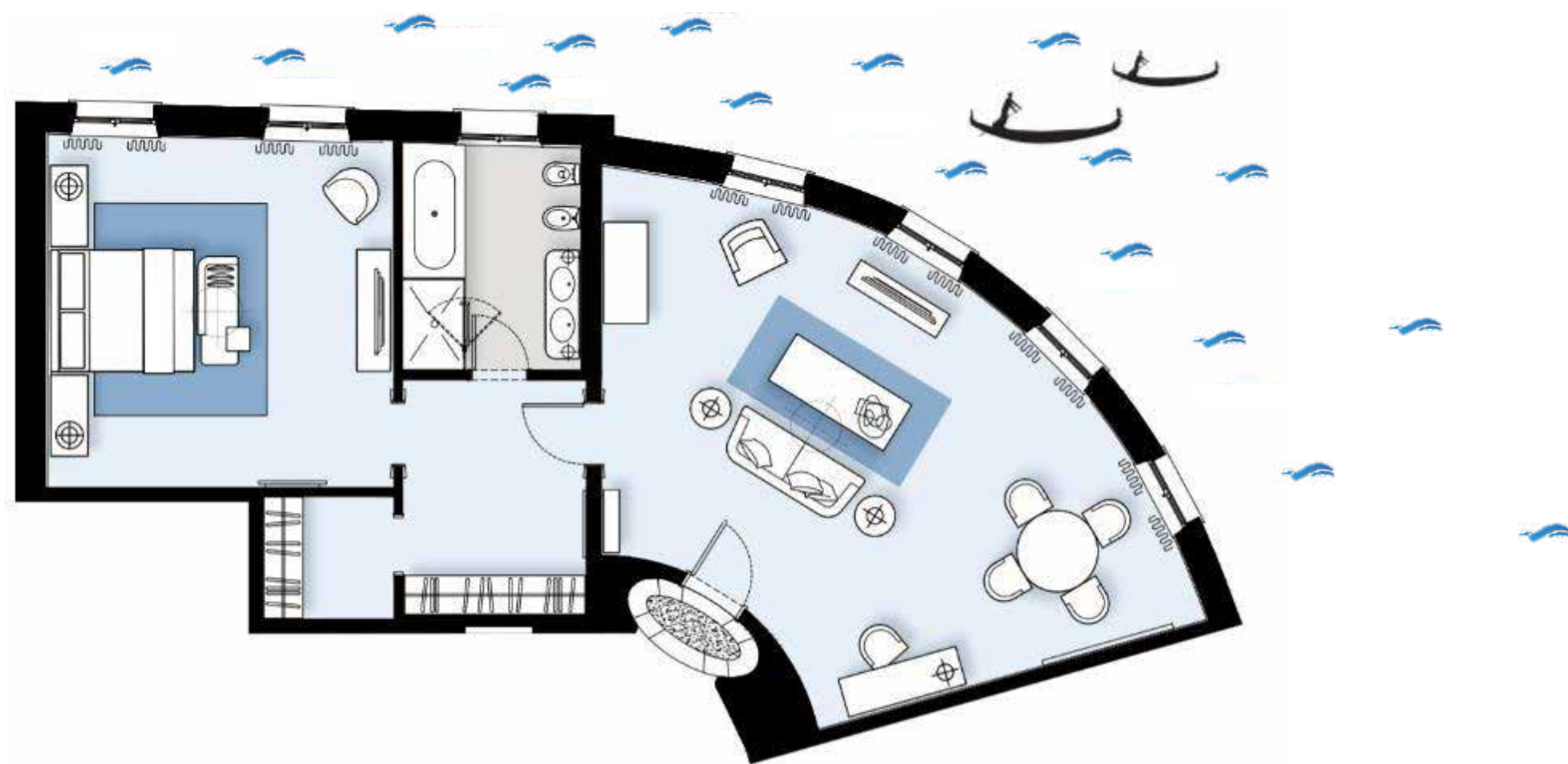


Marco Polo Suite



Marco Polo Suite

MARCO POLO SUITE
(One Bedroom Nr. 185)
Approx. 110 sq m / 1.184 sq ft



Marco Polo Suite

NAVIGANTE WING (5 Bedrooms)

Enjoy the True Venetian Feeling...

The location of the Navigante Junior Suites is truly unique. Situated in the Navigante Wing, and with stunning views over the lagoon, these suites have a true Venetian feeling.

Guests are treated to high ceilings, Murano chandeliers and beautiful interior décor throughout the suites. The suites feature exclusive sitting areas, walk-in closets and elegant bathrooms.

Marco Polo Suite can be extended by the four adjoining Navigante Junior Suites, to form Navigante Wing, accommodates 10-16 adults. (approx. 338 sq m / 3.638 sq ft)



Navigante Wing

FACTS & FIGURES

| | |
|------------|--|
| Size: | Approx. 338 sq m/ 3.638 sq ft |
| View: | Venice & Lagoon View |
| Bedroom: | King size bed |
| Capacity: | 10-16 person maximum occupancy (up to five extra beds are allowed) |
| Bathroom: | Expansive five-fixture bathroom including separate bath and walk-in shower Original Italian marble |
| Inclusive: | <ul style="list-style-type: none">• a bottle of San Clemente Special wine and chocolate/fruit (each room)• complimentary chocolate box• complimentary minibar once per stay (soft drinks only) |

ICONIC FEATURES

- Expansive living room
- Large walk-in wardrobe
- Timeless interior design
- Individually crafted Italian marble and Murano glass accessories
- Design oval-shaped living room (Marco Polo Suite)
- Magnificent Venice Lagoon and St. Mark's view
- Private Navigante Wing access exclusivity



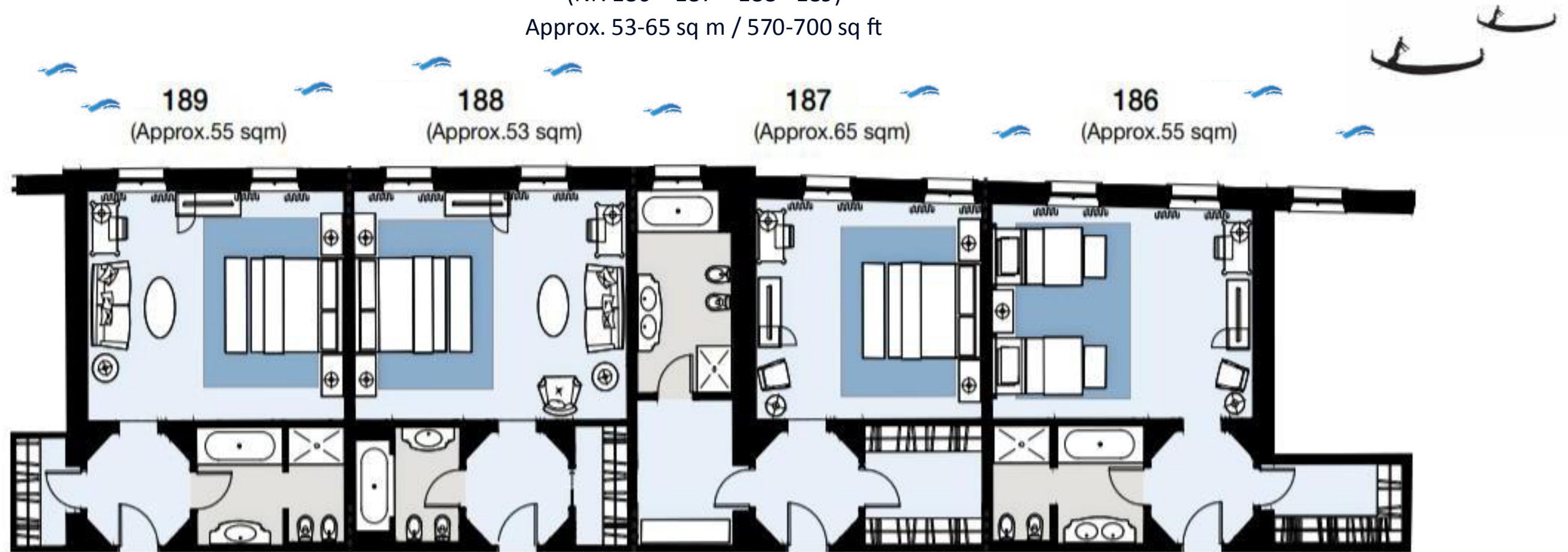
Navigante Wing

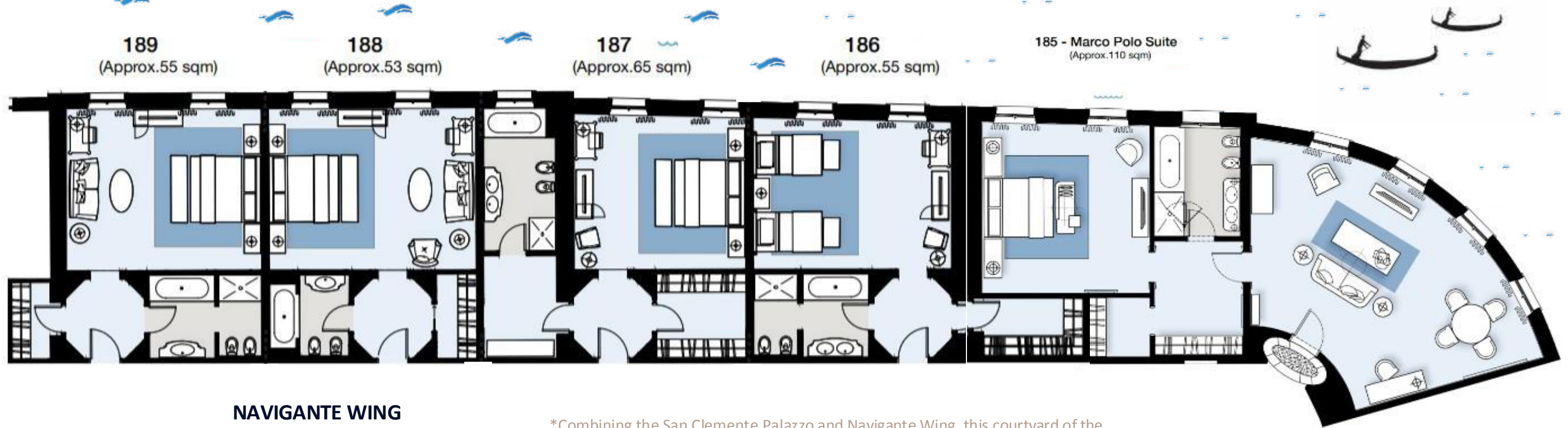
NAVIGANTE JR. SUITE

One Bedroom

(Nr. 186 – 187 – 188 - 189)

Approx. 53-65 sq m / 570-700 sq ft





NAVIGANTE WING
 Five Bedrooms
 Approx. 338 sq m / 3.638 sq ft

*Combining the San Clemente Palazzo and Navigante Wing, this courtyard of the hotel can be booked to form an eight-bedroom palazzo which provides complete independence from the hotel.

Navigante Wing

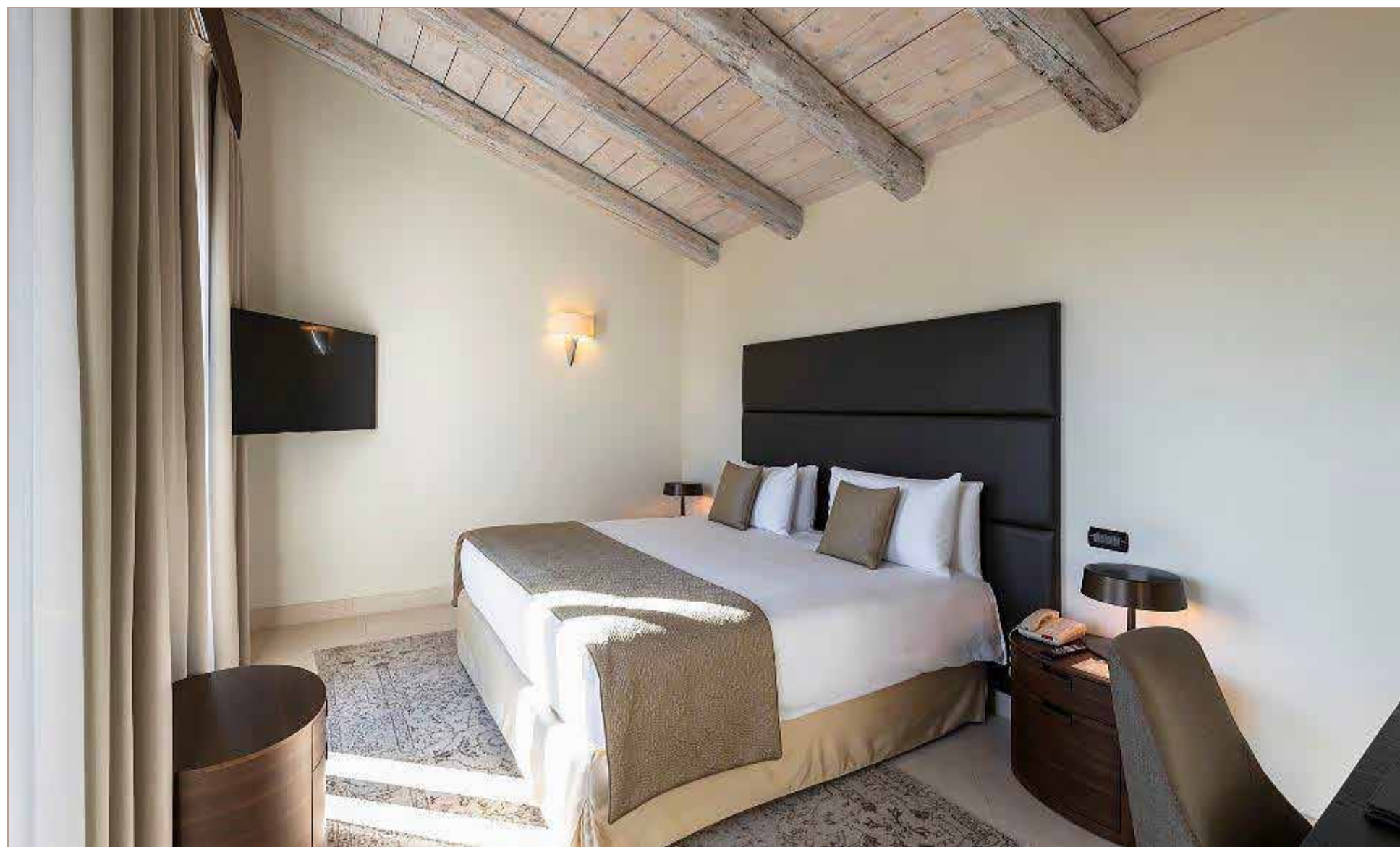
GIARDINI SUITE

An exclusive paradise for your luxury family holiday...

Giardini Suite is an oasis of peace surrounded by a beautiful private garden. It is ideal for both families and those seeking a discreet, relaxing getaway during their time in vibrant Venice.

Set apart from the main hotel building, the elegant Italian bungalow provides all the benefits of a luxury holiday villa. With heritage features and modern décor, it provides seamless indoor-outdoor living, with a dining patio, a stunning area and an enclosed private garden. For additional space and privacy, the villa can be extended with an adjoining Deluxe Room to create a two-bedroom suite for up to six people.

Families with young children are perfectly catered for, with the outdoor pool area nearby. Younger guests receive special in-room amenities, including child-sized robes, towels and slippers and are well accommodated in the hotel restaurants.



Giardini Suite

FACTS & FIGURES

- Size: Approx. 66 sq m/ 710 sq ft
- View: Garden and Lagoon View
- Bedroom: King size bed
- Capacity: 3-person maximum occupancy (one extra bed is allowed)
- Bathroom: Expansive five-fixture bathroom including separate bath and walk-in shower
- Inclusive:
- a bottle of San Clemente Special wine and chocolate/fruit
 - complimentary chocolate box
 - complimentary minibar once per stay (soft drinks only)

ICONIC FEATURES

- Located in a private and sheltered area of the island
- Easy access to the pool and Buddha Bar Beach Restaurant & Pool Bar
- Exclusive enclosed garden offering seclusion and privacy
- Dining table in the garden
- Dedicated private entrance
- Mini pool with jacuzzi for 4 people
- Private dedicated Sun area with personal loungers
- Bespoke designer modern furniture
- Can be chosen as a one-bedroom Villa or combined with suite 702 as two-bedroom Villa
- Private dining service in the garden upon request

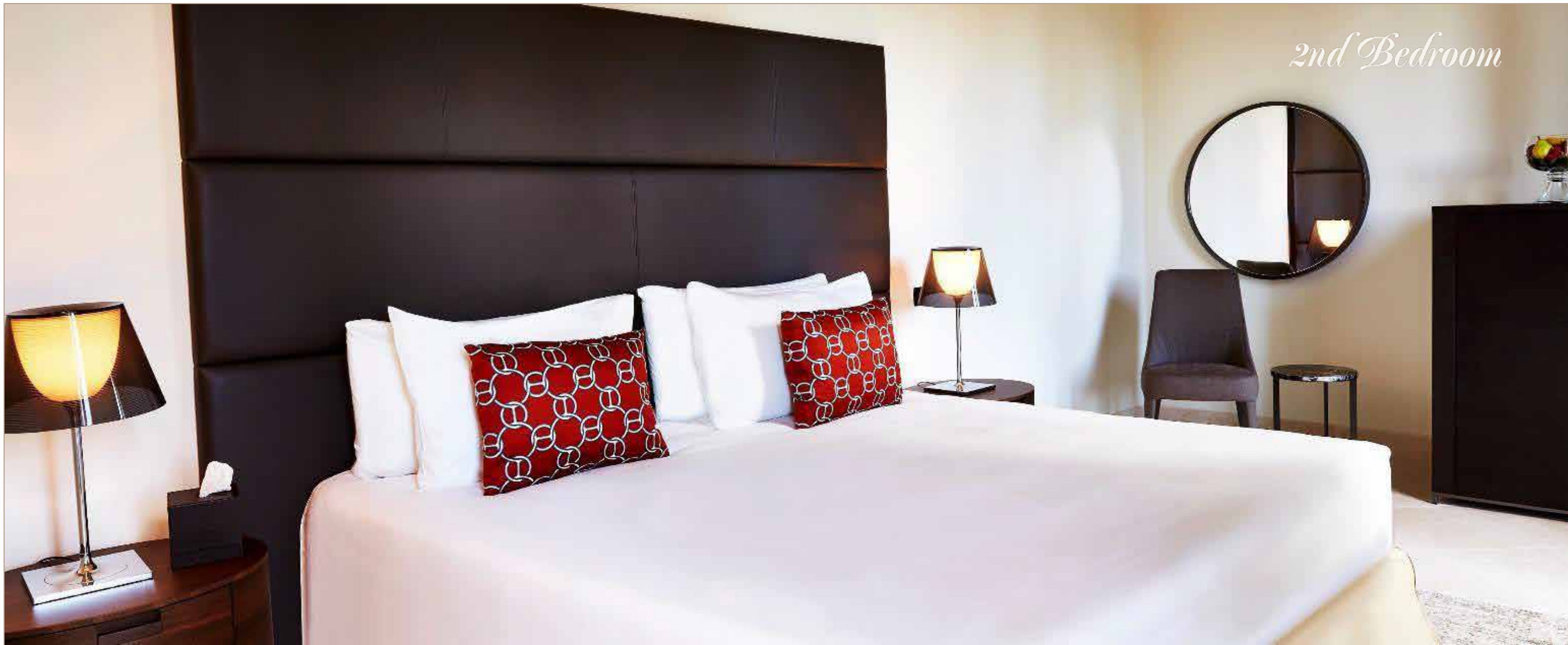


Giardini Suite



Design Bathroom

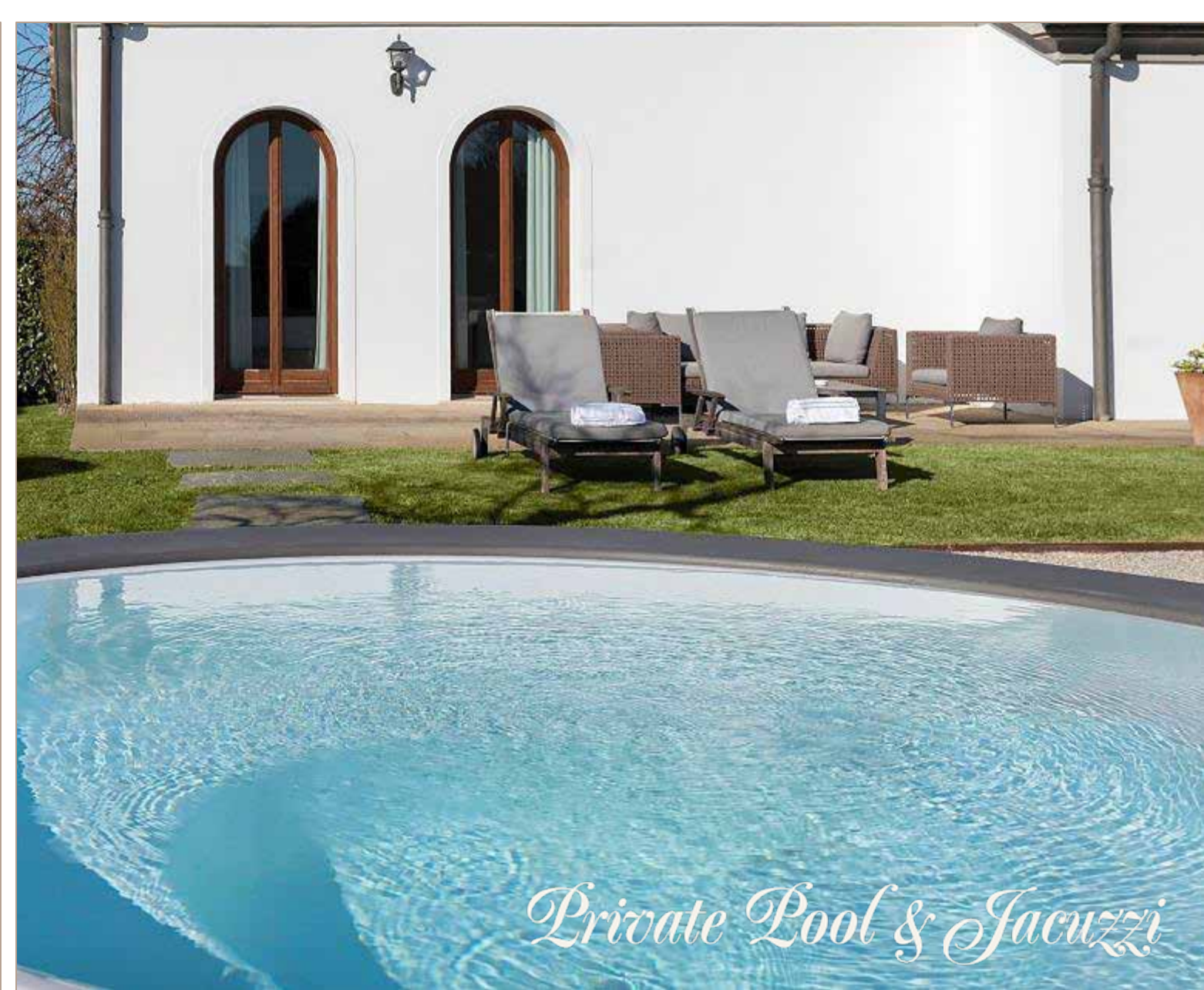
Giardini Suite



2nd Bedroom

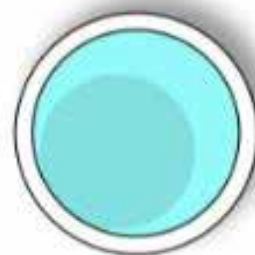
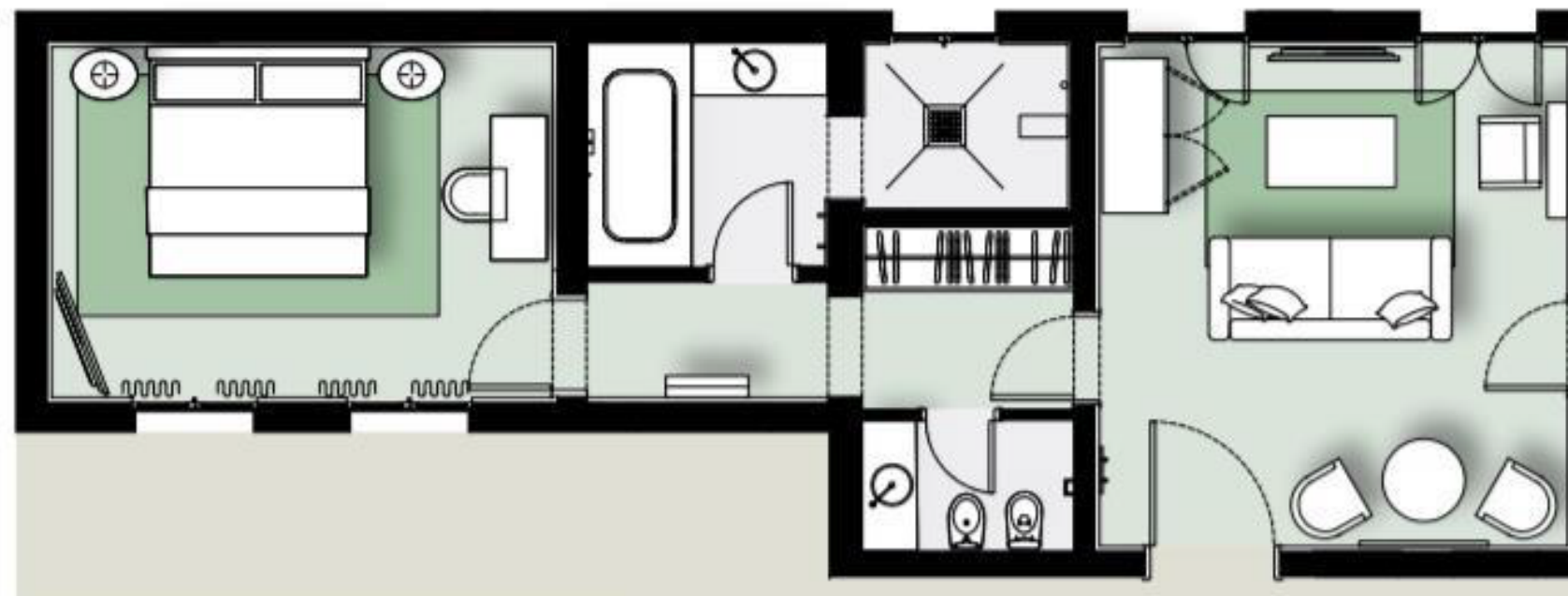


Private Garden



Private Pool & Jacuzzi

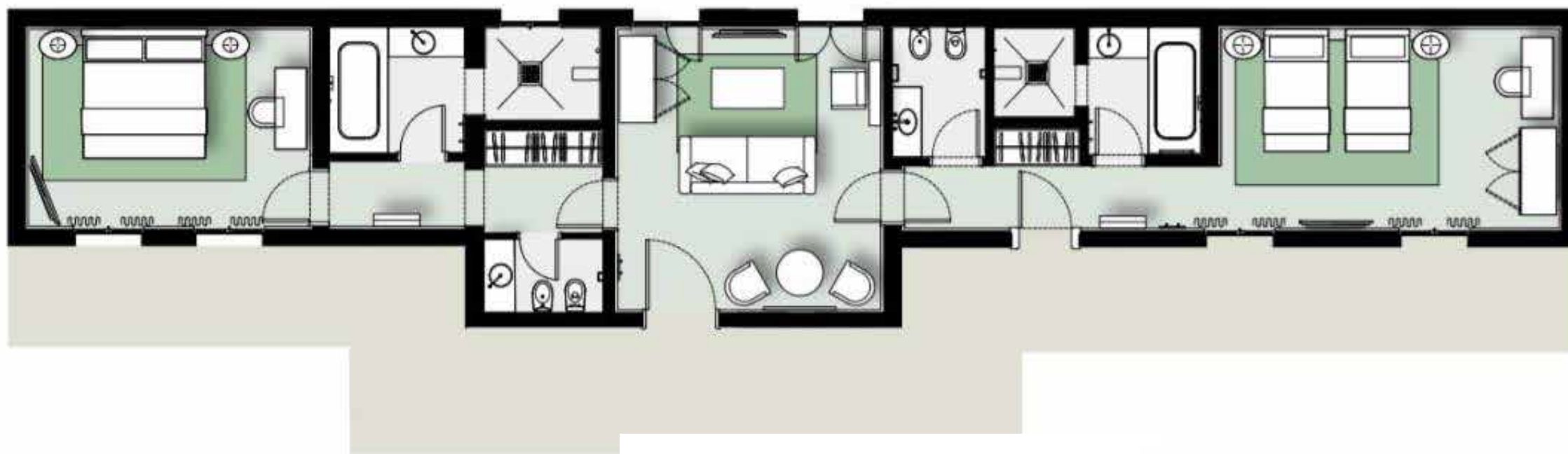
GIARDINI SUITE
(One Bedroom Nr. 701)
Approx. 66 sq m / 710 sq ft



Private Garden with jacuzzi
(Approx. 500 sqm)

Giardini Suite

GIARDINI VILLA
(Two Bedroom Nr. 701 + 702)
112 sq m/ 1.205 sq ft



Private Garden with jacuzzi
(Approx.500 sqm)

Giardini Villa

Private Garden
(Approx.230 sqm)



LIDO SUITE

Modern & Timeless Design...

Located in the Navigante Wing, filled with natural light, the recently refurbished Lido Suite has all-new amenities and modern furnishings, creating an elegant yet relaxing atmosphere. The suite offers matchless views of the lagoon and Lido Island, from which this unique accommodation takes its name.

With a huge marble bathroom, in addition to a spacious walk-in wardrobe and separate living and sleeping areas, this suite guarantees maximum comfort for both short breaks and long-term stays.

The Lido Suite can accommodate up to three guests, and those who seek a larger space can enjoy the combinability of the suite with the adjoining Lido Junior Suite, which is compatible to welcome up to six guests with the two-bedroom option.



Lido Suite

FACTS & FIGURES

| | |
|------------|--|
| Size: | Approx. 100 sq m/ 1.076 sq ft |
| View: | Lagoon and Lido Island View |
| Bedroom: | King size bed |
| Capacity: | 3-person maximum occupancy (one extra bed is allowed) |
| Bathroom: | Expansive five-fixture bathroom including separate bath and walk-in shower Artisan designed Calacatta marble |
| Inclusive: | <ul style="list-style-type: none">• a bottle of San Clemente Special wine and chocolate/fruit• complimentary chocolate box• complimentary minibar once per stay (soft drinks only) |

ICONIC FEATURES

- Located in the private Navigante Courtyard
- Magnificent Lido and Lagoon view
- Individually crafted Calacatta marble and Murano glass accessories
- Modern and timeless interior design
- Private pier access
- Expansive walk-in wardrobe
- Can be chosen as a one-bedroom suite or combined with suite 602 Lido Junior Suite as two-bedroom suite



Lido Suite



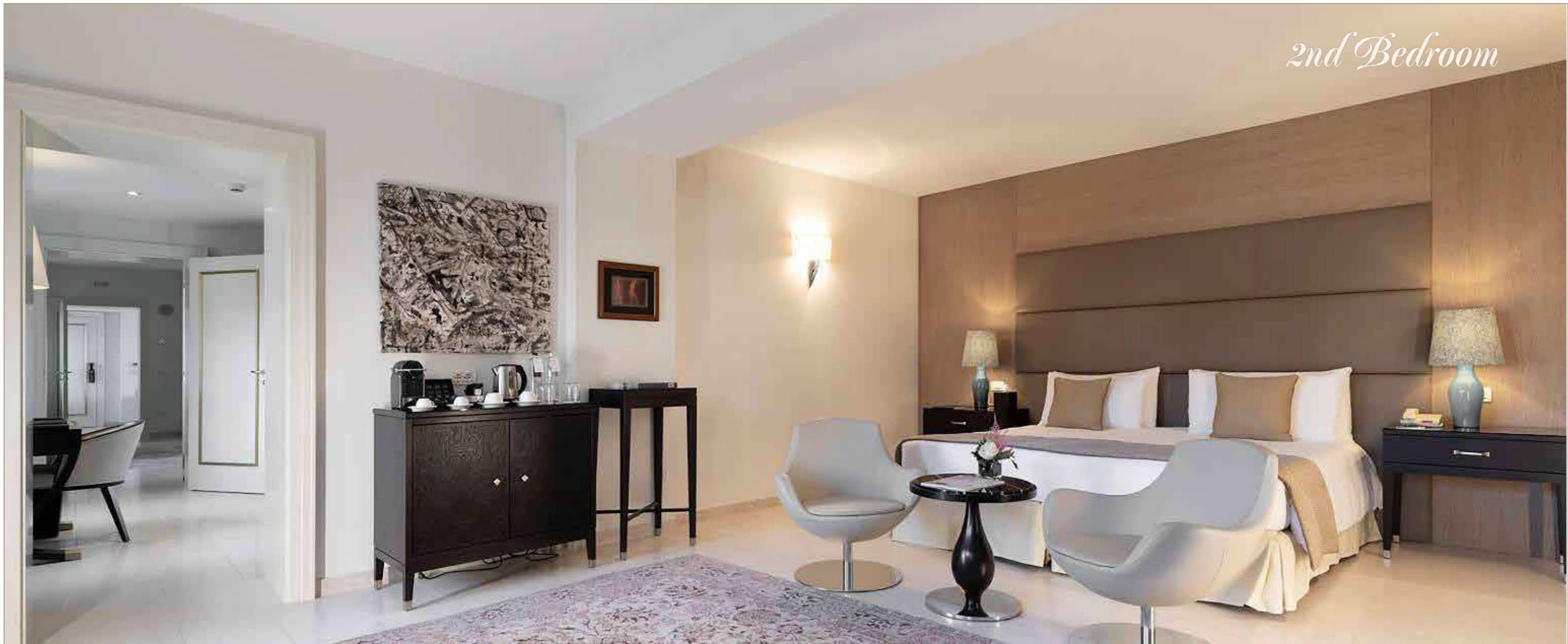
Design Bathroom

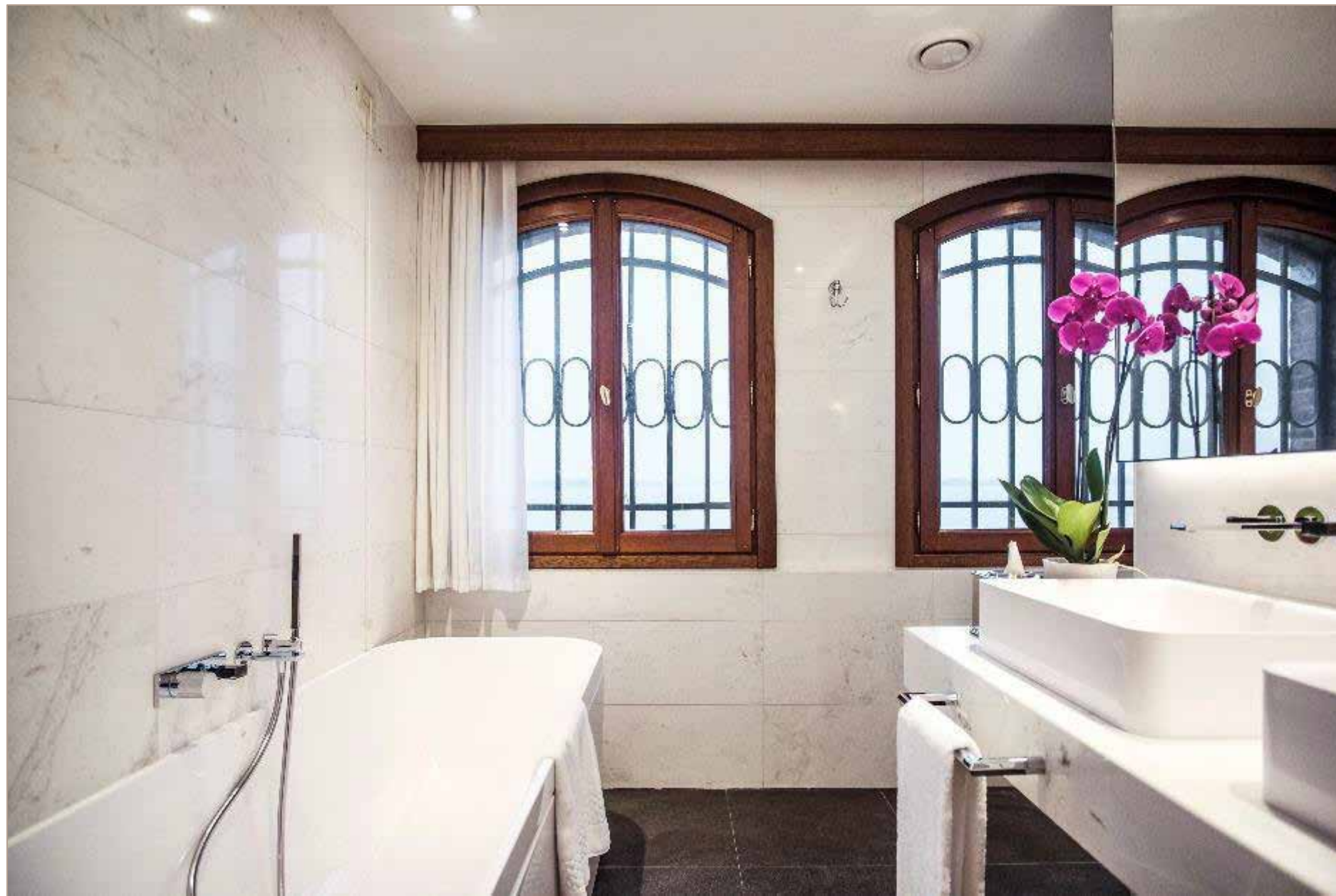
Signature Feature:
Artisan designed Calacatta marble



Lido Suite

2nd Bedroom



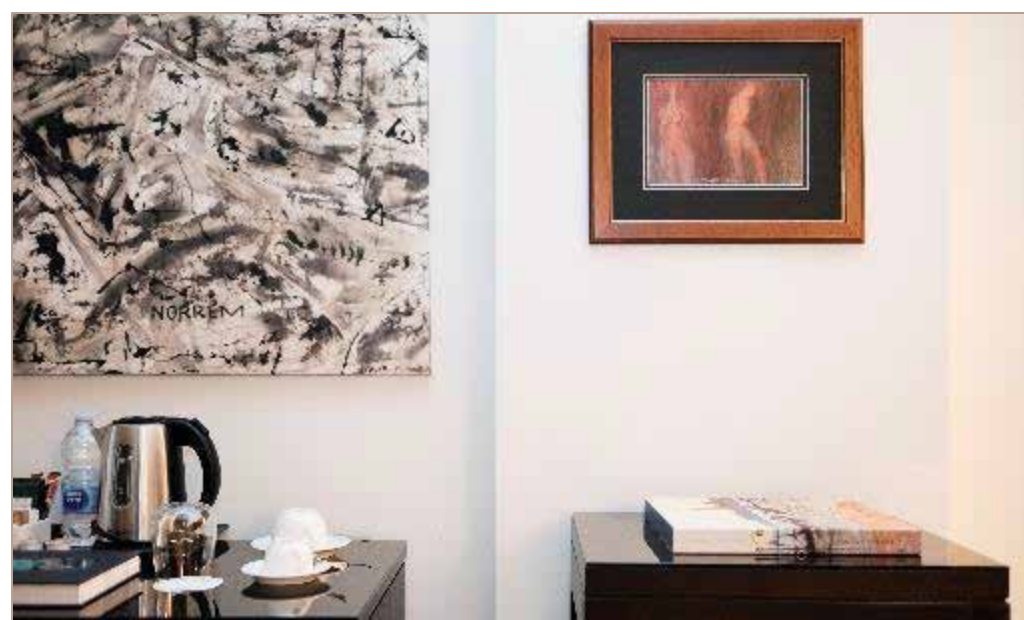


Design Bathroom

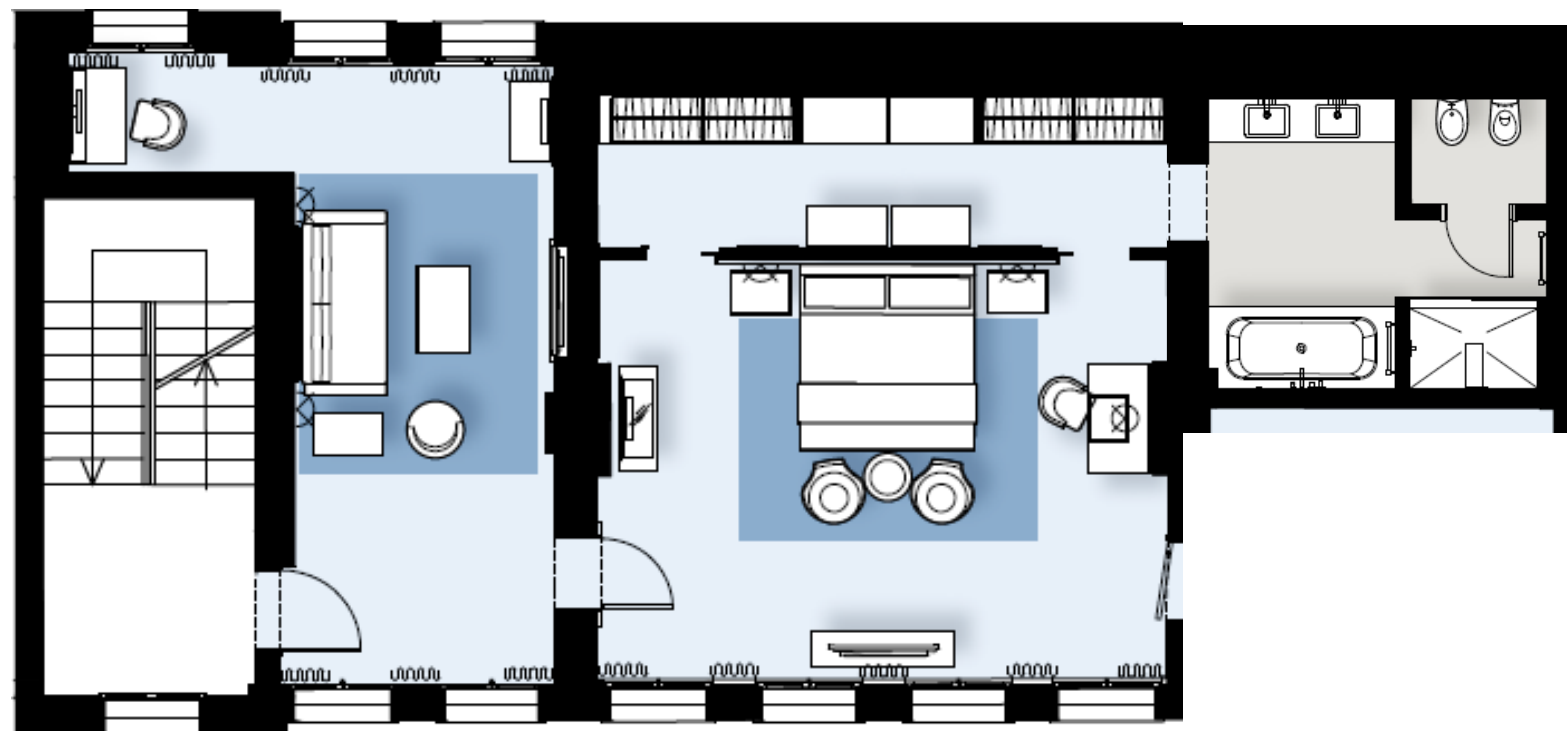
Signature Feature:
Artisan designed Calacatta marble



Lido Residence

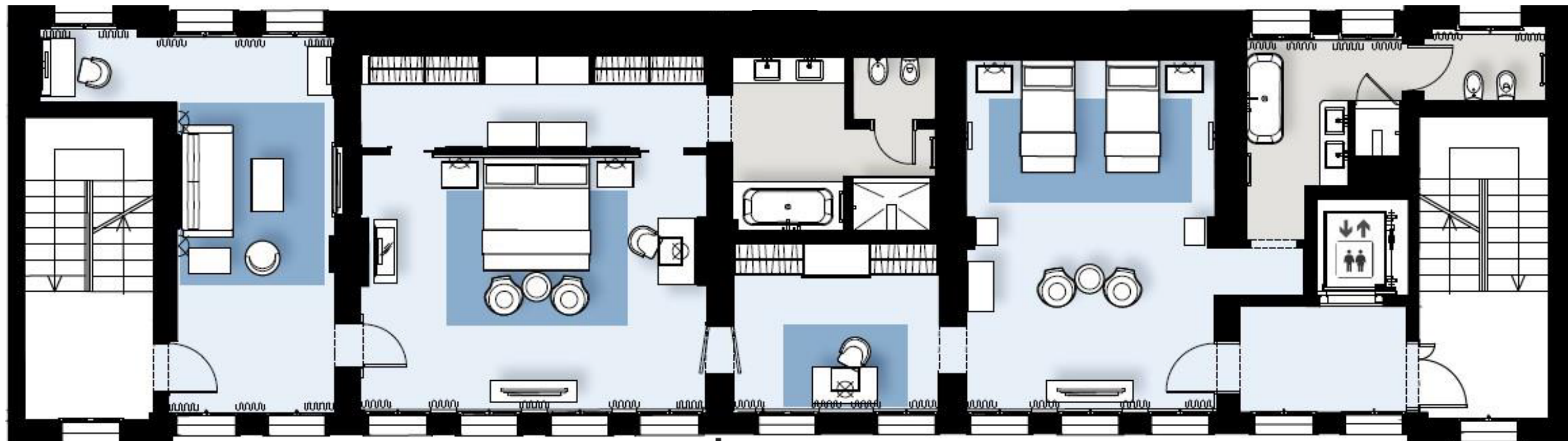


LIDO SUITE
(One Bedroom Nr. 601)
Approx. 100 sq m / 1.076 sq ft



Lido Suite

LIDO RESIDENCE
(Two Bedroom Nr. 601 + 602)
Approx. 190 sq m / 2.045 sq ft



LAGOON SUITE

A Venetian hideaway with innumerable charms ...

Located in a private building next to the historic San Clemente Church and offering inspiring views over the lagoon, this suite is ideal for guests seeking a memorable getaway.

Decorated and furnished in elegant gold and blue, the suite has a regal atmosphere and lots of living space with its separate living room, walk-in closet and large entrance.

The Lagoon Suite is a perfect family base too. When combining two Lagoon Suites with four adjacent rooms, the entire building can be turned into a private Venetian palazzo that accommodates up to 14 adults, making it the ideal venue for extra-special trips.



Lagoon Suite

FACTS & FIGURES

| | |
|------------|--|
| Size: | Approx. 85 sq m/ 915 sq ft |
| View: | Venice & Lagoon View |
| Bedroom: | King size bed |
| Capacity: | 3-person maximum occupancy (one extra bed is allowed) |
| Bathroom: | Expansive five-fixture bathroom including separate bath and walk-in shower Original Italian marble |
| Inclusive: | <ul style="list-style-type: none">• a bottle of San Clemente Special wine and chocolate/fruit• complimentary chocolate box• complimentary minibar once per stay (soft drinks only) |

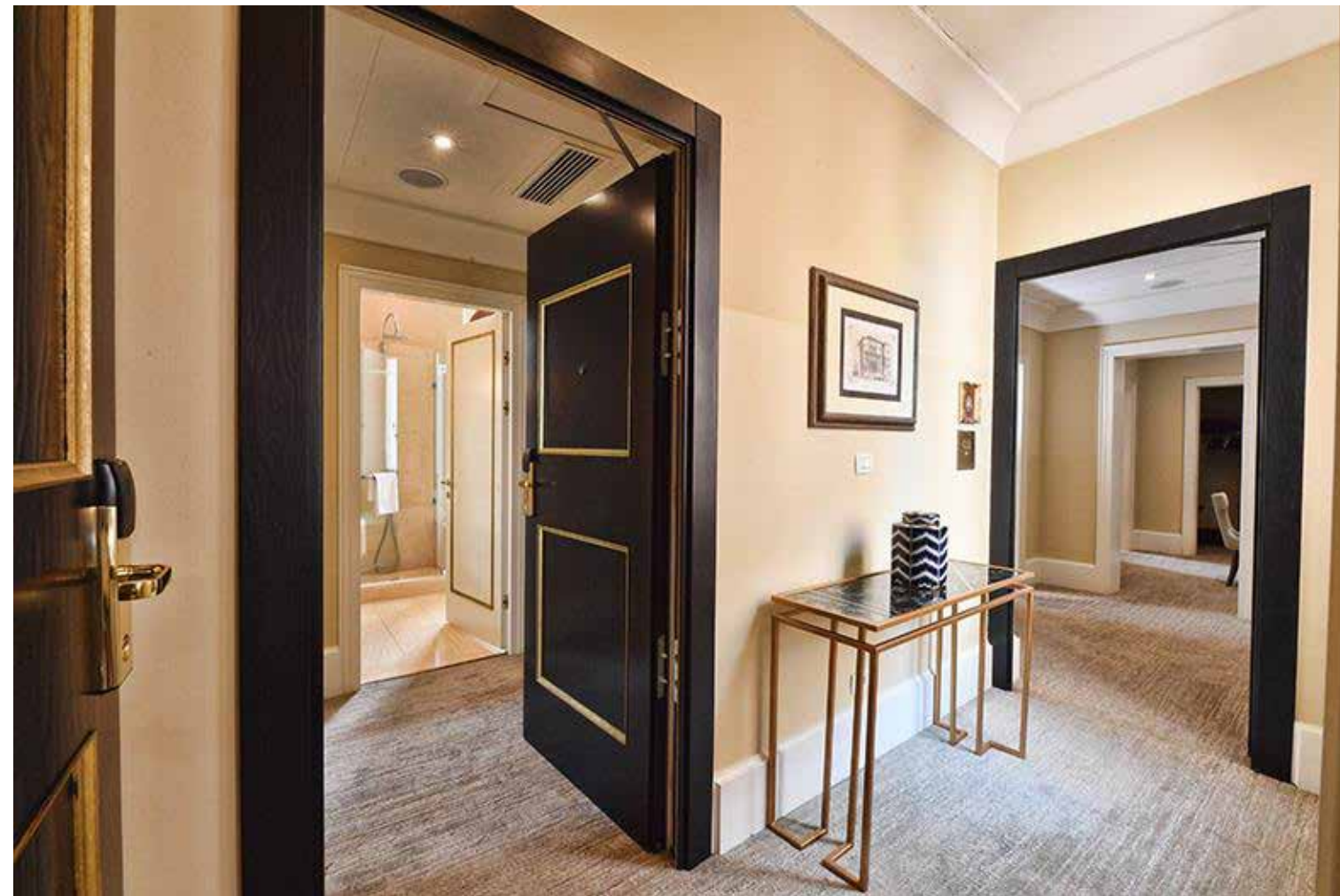
ICONIC FEATURES

- Located in the secluded Lagoon Wing
- Unmatched view of Venice's lagoon and city
- Bespoke designer furniture
- Individually crafted Italian marble and Murano glass accessories



Lagoon Suite





LAGOON RESIDENCE (3- Bedroom) LAGOON PALAZZO (6-Bedroom)

A Venetian hideaway with innumerable charms ...

Located in a private building next to the historic San Clemente Church and offering inspiring views over the lagoon, this suite is ideal for guests seeking a memorable getaway.

The Lagoon Suite is a perfect family base too. Lagoon Residences can be booked as single floor (3-bedrooms) or two floors (6 bedrooms) upon request.

When combining two Lagoon Suites with four adjacent rooms, the entire building can be turned into a private Venetian palazzo that accommodates up to 14 adults, making it the ideal venue for extra-special trips.

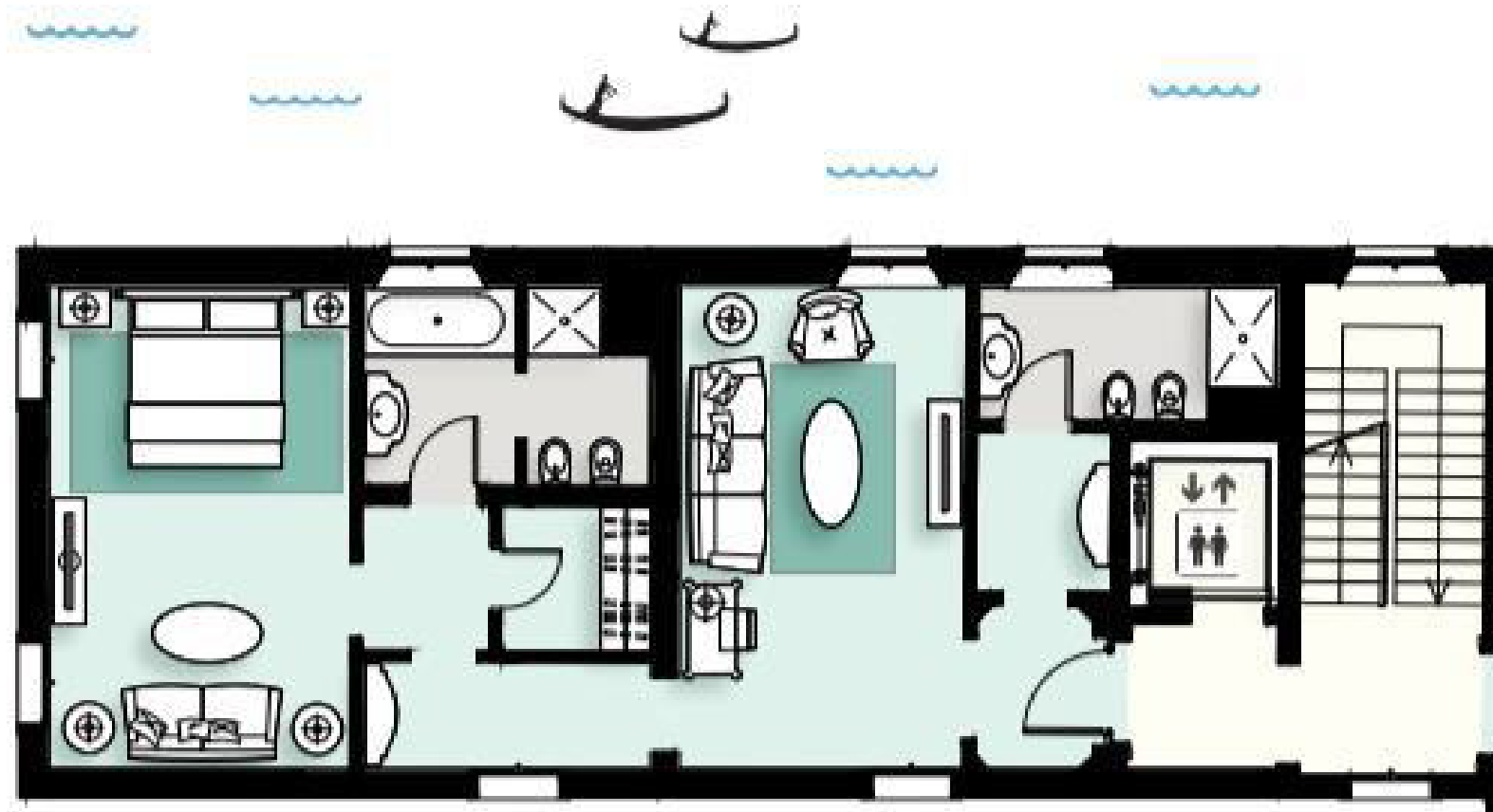


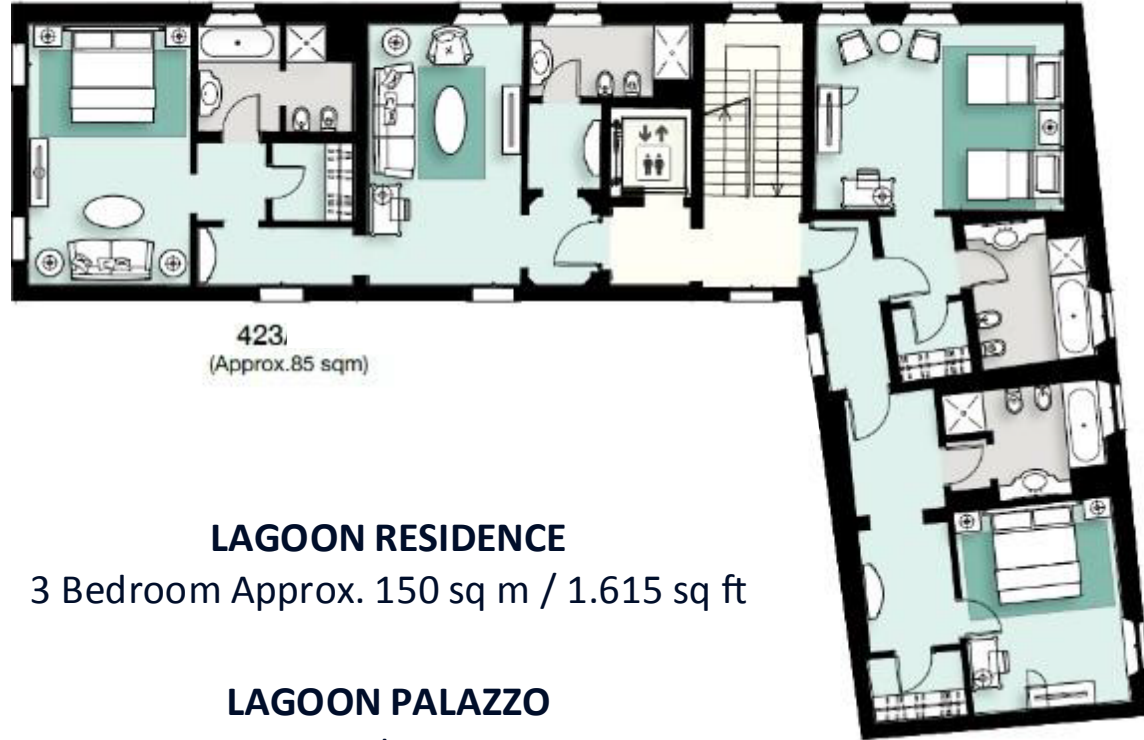
Lagoon Residence & Lagoon Palazzo



Lagoon Residence & Lagoon Palazzo

LAGOON SUITE
(One Bedroom Nr. 423 & 433)
Approx. 85 sq m / 915 sq ft





423
(Approx. 85 sqm)

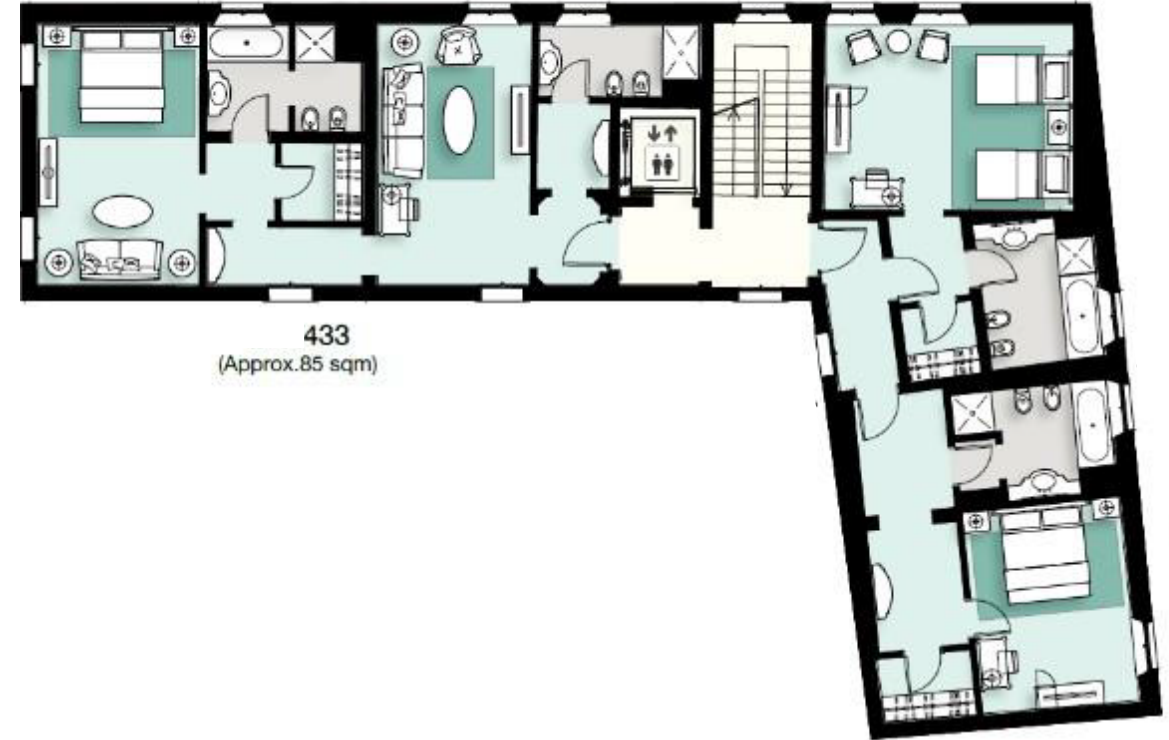
LAGOON RESIDENCE

3 Bedroom Approx. 150 sq m / 1.615 sq ft

LAGOON PALAZZO

6 Bedroom

Approx. 300 sq m / 3.230 sq ft Two Floors
with Private Elevator



433
(Approx. 85 sqm)

432
(Approx. 44 sqm)

431
(Approx. 49 sqm)

VENICE SUITE

A vision of timeless elegance, the Venice Suite is decorated with classic furnishings and luxuriant textiles...

A vision of timeless elegance, the Venice Suite is decorated with classic furnishings and luxuriant textiles, including plush platinum carpeting and silk wallcoverings. The peaceful setting is enhanced with beguiling views of the palace's idyllic gardens and historical courtyard. With its spacious floor plan and welcoming foyer, the suite is an especially popular choice for families.

The Venice Suite is designed with your comfort and convenience in mind. It has a separate entrance area and living room, along with a walk-in closet, helping you to settle in during your stay. These suites, each with a lavish king-size bed or twin beds, plus rollaway beds, can accommodate up to three guests.



Venice Suite

FACTS & FIGURES

Size: Approx. 80 – 88 sq m/ 861 – 947 sq ft

View: Garden / Lagoon View

Bedroom: King size bed

Capacity: 3-person maximum occupancy (one extra bed is allowed)

Bathroom: Expansive five-fixture bathroom including separate bath and walk-in shower
Original Italian marble

Inclusive:

- a bottle of San Clemente Special wine and chocolate/fruit
- complimentary chocolate box
- complimentary minibar once per stay (soft drinks only)

ICONIC FEATURES

- Expansive living room
- Very large walk-in wardrobe
- Timeless interior design
- Individually crafted Italian marble and Murano glass accessories



Venice Suite



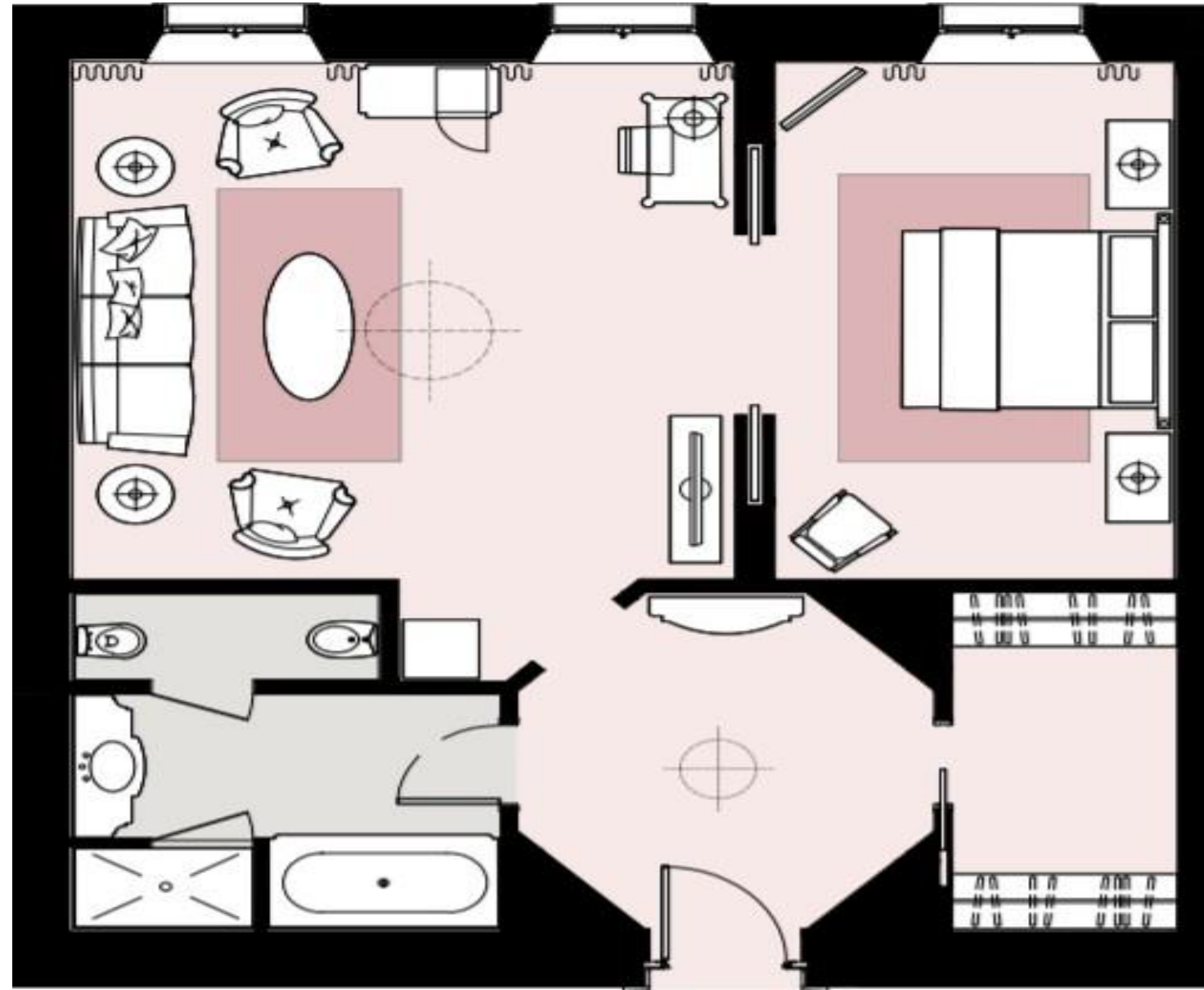
Venice Suite



VENICE SUITE

One Bedroom

Approx. 80-88 sq m / 861 - 947 sq ft



Venice Suite

NAVIGANTE JR. SUITE

Enjoy the True Venetian Feeling...

The location of the Navigante Junior Suites is truly unique. Situated in the Navigante Wing, and with stunning views over the lagoon, these suites have a true Venetian feeling.

Guests are treated to high ceilings, Murano chandeliers and beautiful interior décor throughout the suites. The suites feature exclusive sitting areas, walk-in closets and elegant bathrooms.

The room can accommodate two adults in a king-sized bed, or three with the addition of one rollaway bed.



Navigante Jr. Suite

FACTS & FIGURES

Size: Approx. 53 – 65 sq m/ 570 – 700 sq ft

View: Venice & Lagoon View

Bedroom: King size bed

Capacity: 3-person maximum occupancy (one extra bed is allowed)

Bathroom: Expansive five-fixture bathroom including separate bath and walk-in shower
Original Italian marble

Inclusive:

- a bottle of San Clemente Special wine and chocolate/fruit
- complimentary chocolate box
- complimentary minibar once per stay (soft drinks only)

ICONIC FEATURES

- Expansive living room
- Large walk-in wardrobe
- Timeless interior design
- Individually crafted Italian marble and Murano glass accessories





Navigante Jr. Suite



San Clemente Palace VENICE

San Clemente Palazzo

San Clemente PLACE

La Dolce Brasserie & Pool Bar

Lagon Residence &
Lagoon Palazzo

Navigante Wing

San Clemente Church

Sunset Bar

President's Villa & Dock

Overview